



Anniversary
Art+Craft Trail

Southern Art+Craft Trail

Event 2023



Presented by



74 Exhibitions & Open Studios

**SATURDAY 23RD SEPTEMBER
TO SUNDAY 8TH OCTOBER 2023**

Connect with us!

ArtSouthWA and the Southern Art and Craft Trail

 www.artsouthwa.com.au
 [southernartcrafttrail](https://www.facebook.com/southernartcrafttrail)

**FREE GUIDE
FREE EVENT
ART TRAIL TOURS**



WESTERN AUSTRALIA

WALKING ON A DREAM

THE GREAT SOUTHERN

Adventure through charming small towns and otherworldly landscapes where tall forests sit atop rocky cliffs and rolling farmlands meet tranquil waterways.

Choose your dream adventure

- Learn the ancient stories and inspiring culture on Kinjarling Boodja on an Aboriginal tour.
- Journey through the rivers of Walpole before walking amongst towering tingle tress at the Valley of the Giants Tree Top Walk.
- Marvel at an intact processing factory and chasing ship at Albany's Historic Whaling Station, the only experience like it in the world.
- Hike up one of Western Australia's highest peaks, Bluff Knoll, for wondrous views of Stirling Range National Park.
- Board a research vessel and cruise alongside wild orcas in remote Bremer Canyon or whales in Albany.
- Learn the legend of the Anzacs at Albany's award-winning National Anzac Centre and Albany Heritage Park.
- Swim or snorkel in the protected and peppermint-tinged waters of Greens Pool and Elephant Rocks near Denmark.
- Soar above at Porongurup National Park's Granite Skywalk, with spectacular 360-degree views.
- Feel true awe at the rugged coastlines and surging waves, watching from the platform hanging over The Gap and Natural Bridge.
- Sip through the Great Southern wine region, indulging in world-class varieties, including cabernet sauvignon, merlot and chardonnay.

Follow us at @WesternAustralia | #WAtheDreamState



WESTERN
AUSTRALIA
WALKING ON A DREAM

WESTERNAUSTRALIA.COM

WELCOME

Welcome Message From:

HON RITA SAFFIOTI MLA,
DEPUTY PREMIER; MINISTER FOR TOURISM
AND

HON DON PUNCH MLA,
HON MINISTER FOR REGIONAL DEVELOPMENT

The State Government is a proud sponsor of the 2023 Southern Art and Craft Trail through Tourism Western Australia's Regional Events Scheme (RES).

RES was established to support event holders across WA with the development of events to drive tourism to regional Western Australia. The scheme plays an important role in positioning the state's five tourism regions as exciting destinations to visit and great places to live by showcasing and promoting the host region's unique and diverse attractions.

A total of 65 regional events across WA have been funded through the 2023-24 RES, which also includes a \$250,000 funding pool for the Regional Aboriginal Events Scheme, which exclusively allocates funding to events delivering Aboriginal activities and experiences.

The State Government, through Tourism WA, is proud to sponsor these regional events, which help bring vitality to local communities and drive visitor spend, injecting millions into regional economies.

Tourism is a key part of the State Government's plan to diversify the economy, create jobs and develop business opportunities, especially in regional Western Australia.

Events play an important role in this plan, with the State Government sponsoring a range of sporting, cultural, arts and culinary events across Western Australia through Tourism WA, to attract visitors to our state and encourage them to stay longer, disperse further and spend more while they are here.

We hope everyone enjoys this event and takes the time to explore the Great Southern region.



HON RITA SAFFIOTI MLA,
Deputy Premier;
Minister For Tourism

HON DON PUNCH MLA,
Minister For Regional Development

WELCOME to the 2023 Southern Art & Craft Trail

We proudly offer you the 20th Southern Art and Craft Trail Event and invite you to participate in our 20th anniversary celebrations! You'll discover a wide range of both new and returning artists presenting a diverse range of exhibitions, workshops and visual art experiences for your enjoyment.

The Art Trail is a fantastic opportunity to enjoy the art, food, wine and inspiring southern region environment. Explore the many 'mini' art trails throughout the region, taking in home studios, galleries, outdoor installations and more.

This year we see the return of the 'Schools on the Art Trail' exhibitions filled with work from around 400 artists of the future. You'll find their work in retail and other spaces across multiple towns. You'll also be able to participate in 6 different workshops and engage the whole family in the City of Albany Youth Art space at The Albany Town Hall.

We welcome your vote in the 'Art Trail Exhibition Award' sponsored by Regional Development Australia Great Southern. Your popular vote survey will see an artist or organisation receive a \$3,000 boost to their practice.

Meet the Art Trail artists on our Facebook and Instagram @southernartcrafttrail and connect personally with artists prior to visiting. You can find their details and location maps on www.artsouthwa.com.au

We also invite you to use our tag and hashtags #southernartcrafttrail and #arttrailwa2023 when you are out and about and share your images on social media.

Enjoy your journey of artistic discovery.



MERRY ROBERTSON
Chair, ArtSouthWA

ART TRAIL INFORMATION

How to Find the Artists

To discover live maps to venues and access all artist details including their own websites, please go to artsouthwa.com.au Drop down the Members menu and click on Members Directory.

Plan Your Route

Exhibitions have varying opening times so check the dates and times when planning your route.

Dates marked with a red cross indicate CLOSED that day.

Travel Safely

Travel at a safe speed – adapt your speed for the weather, light, traffic and road conditions. Be aware of wildlife, livestock, road trains and machinery on country roads.

Be aware that you are responsible for your own safety and personal belongings. ArtSouthWA is not responsible for any loss or damage or injury, however caused, to the property or person of any visitor to studios, or other premises listed in this guide book.

Opening Times

Opening times of venues are indicated in the guide book according to information provided at time of going to print. ArtSouthWA is not responsible for any venue not being open when indicated in the guide book. If in doubt, please contact the artist or venue first. Exhibitors prefer that you only visit during the stated opening times.

ArtSouthWA activities include:

- Presentation of the annual Southern Art and Craft Trail Event, and SACT offerings.
- An annual program of art education workshops for its members and other interested members of the public.
- Promotion of members for 12 months of the year through various social media platforms.
- An online member directory at www.artsouthwa.com.au
- Regular posts of opportunities and arts news on our Facebook page 'ArtSouth WA and the Southern Art & Craft Trail'.

Event Locations

Each venue listing outlines the most direct route to the venue. They are also geographically grouped and colour coded throughout the booklet.

The centre map is designed as a guide to assist in planning your route. We recommend you use comprehensive local or online maps to assist you to find venues. All Exhibitions have a Google Maps locator on www.artsouthwa.com.au See the 'Member Directory' then just select 'Trail Directory'.

Photography

Photos used throughout this booklet have been provided by artists and other credited sources.

No photos can be reproduced without the express permission of the copyright owners.

We encourage you to take photos of artists and their exhibitions (with their consent) and post to Social Media. On Facebook and Instagram tag with @southernartcrafttrail and use the hashtags #southernartcrafttrail and #arttrailwa2023 on both FB and Insta.



Cover Image - June Smith

Each year we select a member who has contributed to the regional arts community over many years. In our 20th anniversary year we honour June Smith who has entered the Art Trail every year from 2005 – in all 17 years.

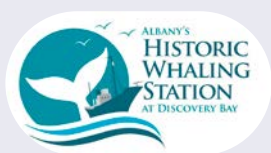
June is a mainly self-taught artist who began painting in 1991. After some brief private tuition, she began to pursue her own style following the teachings of the Old Masters of European art. June began her Art Trail involvement in 2005 after moving from Perth down to Denmark, WA. A versatile artist, she paints still life, bold florals, landscapes, seascapes and portraits.

SCHOOLS ON THE ART TRAIL

See Young Artists' Work at the Following Venues

Schools on the Art Trail is back, introducing you to the work of our regional students. Look out for these exhibitions located in our Art Trail towns- utilising public buildings, retail venues and windows. While the works are not for sale, we encourage you to admire our rising stars and connect with the school, should you wish to know more.

With the generosity of our long time Art Trail supporter - Albany's Historic Whaling Station at Discovery Bay – participating schools are in



the draw to win one of three family passes to contribute towards their school fundraising programme.

A MANJIMUP SENIOR HIGH SCHOOL

Years Nine and Ten
Manjimup Heritage Park
151 Giblett St, Manjimup

B NORTHCLIFFE DISTRICT HIGH SCHOOL

Years One to Six
Naughty Noodle Bar
11 Wheatley Coast Rd, Northcliffe

C FRANKLAND RIVER PRIMARY SCHOOL

Years Pre-primary to Six
Frankland River CRC
55 Wingebellup Rd, Frankland River

D BRAESIDE PRIMARY SCHOOL

Years Pre-primary to Six
116 Clive St, Katanning

E DUMBLEYUNG PRIMARY SCHOOL

Years One to Six
Absolon St (mainstreet), Dumbleyung

F NEWDEGATE PRIMARY SCHOOL

Years Kindergarten to Six
Newdegate Grocer and Café
7 Maley St, Newdegate

G LAKE GRACE DISTRICT HIGH SCHOOL

Years Kindergarten to Ten
CBH Office
38 Stubbs Street, Lake Grace

H MT BARKER COMMUNITY COLLEGE

Years Four, Five and Six
Mt Barker Library, 1 Lowood Rd, Mt Barker
and West Cape Howe Wines, 14923 Muir Hwy,
Mt Barker

I WALPOLE PRIMARY SCHOOL

Years One to Six
Philippine Magic Cafe, Nockolds St, Walpole
and The Marron Tale Cafe and Marron Farm
5284 South Coast Hwy, Bow Bridge

J KWOORABUP NATURE SCHOOL

Years Five and Six
School grounds, 2A Inlet Drive, Denmark

K WOODBURY BOSTON PRIMARY SCHOOL

Years Kindergarten to Year Six
The Shelley Beach Arts Centre
1 Shelley Beach Rd, Torbay

L ALBANY PRIMARY SCHOOL

Years Kindergarten to Year Six
Hillzeez, 183 York St, Albany
and Vancouver Arts Centre, 85 Vancouver St,
Albany

M FLINDERS PARK PRIMARY SCHOOL

Years Kindergarten to Six
The City of Albany Library
221 York St, Albany

N NORTH ALBANY SENIOR HIGH SCHOOL

Years Seven to Twelve
The Health Nut
30 Peels Place, Albany

O PARKLANDS SCHOOL

Year Five
Hazbeanz, 5d Toll Pl, Albany

P ALBANY SENIOR HIGH SCHOOL

Years Seven to Twelve
Kates Place, 42 Stirling Terrace, Albany

Q GREAT SOUTHERN GRAMMAR

Year Two
Albany Entertainment Centre Foyer
2 Toll Place, Albany

R MOUNT LOCKYER PRIMARY SCHOOL

Years Kindergarten to Six
The Health Nut
2 Flinders Parade, Albany

WITHDRAWN

ARTIST AND VENUE INDEX

VENUE ARTIST

1	Manjimup Arts Hub
2	Gallery Aura
3	Gnowangerup CRC
4	Kerry Scally
5	Tania Spencer
6	Lake Grace Art Group
7	West Cape Howe Wines
8	Art Chatter Gallery
9	Gallery Sobrane
10	The Art Shed
11	The Station Gallery
12	Mitchell House
13	Bronte Wilkes
14	Porongurup Art Shed
15	Sarah Walker
16	Elizabeth Edmonds
17	Gail Guthrie Of Majestic Merino
18	Paul Moncrieff
19	Inner Vision Studio
20	Marion Nelson
21	Sisters Of Eve Art Gallery
22	Jonathon Hook
23	June Smith
24	Helen And Lindsay Okamoto
25	Denmark Visitor Centre Gallery

VENUE ARTIST

26	Riverfront Gallery
27	Mill Art Group
28	Cornelia Wynne Ceramics
29	Meleah Farrell + Narelle Clark
30	Shelley Beach Arts Centre
31	Torbay Glass Studio And Gallery
32	The Atelier At Beaumaris Escape
33	Merry Robertson
34	Rachel Doring Art
35	Phoenix Fine Arts
36	Albany Art Group
37	Albany Pottery Group
38	Figs; Felters Of The Great Southern
39	John Manson
40	Isabelle Osborne & Ali Osborne
41	Nathan Watson
42	Cynthia Orr
43	Make A Scene Artists
44	Maxine Holman
45	Rose Chapman-Hill
46	Ulla Zettergren
47	Ros Jenke And Julie Fletcher
48	Adventures In Wood
49	Derek Schapper
50	Liana Berry

VENUE ARTIST

51	Down South Arts And Craft Collective Inc
52	Butterscotch: Penny Baker
53	Tracing Gondwana
54	Interactive Children's Space
55	Susha Manton
56	Scout Seas
57	Nicci Daniele
58	Deo Gloria Art Group
59	Coastal Creations And Co
60	Community Living Association
61	Helen Laing
62	Bronwen Newbury
63	Laura Newbury
64	The Eclectic Unity Group
65	Carol Hope
66	Designer Dirt Creatives
67	Cocreatives
68	Ron Baker And Marjan Bakhtiarikish
69	Abigail Parker
70	King River Recreational Club Inc
71	Bev Doig
72	Lower Kalgan Hall Artists
73	Ebony Harris
74	Catherine Higham

Legend

G Gallery Exhibition	H Home Display	S Studio Exhibition
O Other Venue	R Restaurant / Café	W Winery
 Venue open at other times through the year Exhibiting artists, open days and times may vary. Check with venue.	 Venue is running a workshop, see page 8	
 Refreshments available at venue or close by	 Restroom Facilities	
 Wheelchair Access	 Off-road Parking	
 Credit Card Facilities Available	 Day Venue CLOSED Date Date covered	

Region Colour Codes

1-6	Nannup / Kojonup / Gnowangerup / Lake Grace
7-14	Kendenup / Mt Barker / Porongurup
15-32	Walpole / Denmark / Torbay
33-74	Albany

Administration Officer

Anne Sparrow
P.O. Box 6009, Albany, WA 6332
Email: admin@artsouthwa.com.au

www.artsouthwa.com.au



Look for this sign at all Art Trail venues

History of the Southern Art and Craft Trail

Showcasing the visual arts for 23 years

How it all began

A dedicated team from Denmark lead by Angus McKenzie formed ArtSouthWA in 2000 and created the first Southern Art and Craft Trail in 2003. It featured 36 exhibitions of individuals and groups of artists and craftspeople stretching from Walpole to Bremer Bay, including Denmark, Albany, Mt Barker and many towns along the way.

How it grew

Each year the number of exhibitions grew, peaking in 2018 to 93. Only COVID brought a halt in 2020. In 2023 exhibitions numbers have risen back to 74 seeing many newcomers and representing over 450 artists and a further 400 student artists.

Over 650 different artists and groups have taken part over the years, with the many exhibiting

multiple times including Torbay Glass - 20, Adventures in Wood - 18 and June Smith - 17.

How it's been supported

ArtSouthWA supports and promotes hundreds of regional artists but could not do so without the support of two essential groups - the ArtSouthWA Board and the sponsors and grant providers.

The ArtSouthWA Board gives 2,000 volunteer hours over 12 months to produce the Art Trail. Along with a part time administrator, it is more than a full-time job!

While the Great Southern Development Commission supported the early Art Trails for 5 years, Tourism WA together with the City of Albany are the longest continuing Art Trail supporters. Bendigo Bank also gave support for 10 years, with

Regional Arts WA now a much-appreciated partner.

The future

ArtSouthWA and their product the Southern Art and Craft Trail, continues to grow and promote both the opportunities for regional artists to showcase their work, and the reasons for visitors to come and explore this amazing area.



WEST CAPE HOWE WINES



Tel: 08 9892 1444

Proudly supporting the **Southern Art+Craft Trail**

Visit our Cellar Door 11km west of Mount Barker open 7 days/week.
Mon - Fri 10am - 5pm Sat/Sun 11am - 4pm
www.westcapehowewines.com.au

See Artists at Work at the Following Venues and Times

1 MANJIMUP ARTS HUB

See daily demonstrations of linoprinting, spinning, textiles and more.

Sun 24th Sept, 1pm to 4.30pm: Elaine Steele -

Geliprinting Demystified

Sun 8th Oct, 1pm to 4.30pm: Holly Lamey -

Awesome Acrylic Cheat

Max 10 persons per workshop, all materials supplied. See our Facebook [facebook.com/manjimupartshubinc/](https://www.facebook.com/manjimupartshubinc/) for details and bookings.

8 ART CHATTER GALLERY

Each day, artists will be working on paintings in the gallery.

12 MITCHELL HOUSE

Each day, artists in attendance will be working on current projects and happy to explain techniques and materials.

16 ELIZABETH EDMONDS

Thur 28th Sept 10am-11am: Artist Floor Talk

24 HELEN AND LINDSAY OKAMOTO

Each Saturday and Sunday 1pm-2pm (or on request): Lindsay will demonstrate turning wood and acrylic

31 TORBAY GLASS STUDIO AND GALLERY

Come and chat to Kylie Porter as she works on her current artworks.

35 PHOENIX FINE ARTS

Thurs 5th Oct, 1pm to 3pm: Abigail Parker - Botanical Art

36 ALBANY ART GROUP

Wed 27th Sept & Wed 4th Oct, 1pm to 3pm: AAG Pastel Group

Fri 6th Oct, 10.30am to 12.30pm: Abigail Parker - Botanical Art | Susan Giles - Natural Environment in Oil | Kimberly Rose-Jones - Adventures in Gouache

Sat 7th Oct, 10.30am to 12.30pm: Marjan Bakhtiarikish - Portrait Sun 8th Oct, 10.30am to 1pm: AAG Portrait from Life

38 FIGS: FELTERS OF THE GREAT SOUTHERN

A variety of demonstrations will be ongoing during the Art Trail. We welcome enquiries as you watch our felters create!

48 ADVENTURES IN WOOD

Always a project or a repair job on the go. Ask questions and have a chat!

56 SCOUT SEAS

Each day the studio will be attended by Scout Seas artist Carter. Visitors are welcome to watch and discuss the range of works underway.

58 DEO GLORIA ART GROUP

Artists will be working on current projects during the Trail and welcome your interest in their techniques.

64 THE ECLECTIC UNITY GROUP

Join in one of our daily workshops/demonstrations or watch the art processes as they evolve. Workshop details available at the venue.

66 DESIGNER DIRT CREATIVES

Various artists can be seen at Designer Dirt during the Art Trail. See designerdirtwa.com.au or our social media for more details.

We'll be holding a variety of workshops throughout the Art Trail. Please visit designerdirtwa.com.au workshops for more details. Attendees must be 14 or older. All materials supplied

69 ABIGAIL PARKER

Ongoing demonstrations of works in progress - botanicals and wildlife in oils and watercolours

72 LOWER KALGAN HALL ARTISTS

Sun Oct 1: Oil Painting demonstration - landscape with a limited palette with Barry Mackie

Thurs Sept 28 or Sat Sept 3, 1pm: Stamp Carving and Block Printing with Bev Doig. Max 6 persons

Wed Sept 27, 10am: Porcelain Painting workshop with Barb Cronin. Max 8 persons

All workshops 2.5 hours, \$40.00 pp, min age 14 Details and bookings - <https://www.bevdoigart.com/workshops>



MANJIMUP ARTS HUB INC

Sculpture, Painting, Jewellery, Printmaking, Drawing, Metalwork, Glasswork, Textiles, Ceramics, Woodwork, Photography, Encaustic

Manjimup Arts Hub Inc.
39 Giblett St, Manjimup WA 6258
0438 980 256

1



Home of great art, creations and collections from the Manjimup Shire and Southern Forests Region. Representing a myriad of artists, this exhibition showcases an enormous range of arts and crafts for sale, along with opportunities for workshops and viewing artists at work.

In central Manjimup, find us on the roundabout corner of Giblett St and Ipsen St.

Open every day 9:30am to 4pm



SAT	SUN	MON	TUE	WED	THU	FRI	SAT	SUN	MON	TUE	WED	THU	FRI	SAT	SUN
23	24	25	26	27	28	29	30	1	2	3	4	5	6	7	8



GALLERY AURA

Painting, Textiles, Encaustic, Printmaking, Glasswork, Ceramics, Mixed media, Jewellery

Gallery Aura
100 Albany Hwy, Kojonup WA 6395
08 9831 0480

2

A thoughtfully curated exhibition of beautiful things created by very clever West Australian artists. We have brought together an extensive range of subjects and media including wall art, ceramics, jewellery and textiles.

The Gallery is located on Albany Hwy, centre of Kojonup, next to the Post Office, opposite the Shire Hall. Travelling from Albany, it's on the left.

Open every day 10am to 5pm



SAT	SUN	MON	TUE	WED	THU	FRI	SAT	SUN	MON	TUE	WED	THU	FRI	SAT	SUN
23	24	25	26	27	28	29	30	1	2	3	4	5	6	7	8



GNOWANGERUP CRC

Painting, Jewellery, Sculpture, Drawing, Ceramics, Woodwork, Photography, Mixed media

Gnowangerup CRC
47 Yougenup Rd, Gnowangerup WA 6335
0456 874 004

3

Visit this wonderful and wide ranging art and crafts exhibition representing our local artists and those from a little further afield.

The Gnowangerup CRC "Yougenup Centre" is located on the main street of Gnowangerup - 150km north/east of Albany on the Broomehill/Gnowangerup Rd.

*Open days 8:30am to 4:30pm
Weekends 10am to 1pm*



SAT	SUN	MON	TUE	WED	THU	FRI	SAT	SUN	MON	TUE	WED	THU	FRI	SAT	SUN
23	24	25	26	27	28	29	30	1	2	3	4	5	6	7	8



KERRY SCALLY

Painting, Textiles, Ceramics

48 Absolon St, Dumbleyung WA 6350
0419 956 156

4

CHILDHOOD IN THE FIFTIES AND SIXTIES This series of paintings with the theme of childhood on a farm on the edge of Dumbleyung Lake features alongside other artworks.

Venue is on the corner of Absolon St and Love St. Entry is on Love St, my gate will be open and the studio is behind my house.

Open every day 9am to 4pm



SAT	SUN	MON	TUE	WED	THU	FRI	SAT	SUN	MON	TUE	WED	THU	FRI	SAT	SUN
23	24	25	26	27	28	29	30	1	2	3	4	5	6	7	8



TANIA SPENCER

Wire sculpture, Jewellery, Metal textiles

Tania Spencer Art Studtio
27 Bennett St, Lake Grace WA 6353
0429 041 063

5

BEYOND LANDSCAPE Wirework, jewellery and metal drawings responding to living in a rural landscape and the artist's reinterpretation of nature as experienced by her daily walks.

From Stubbs St, turn at the Post Office, then turn right into Bennett St, the venue is 2nd house on the right.

*Open days 10am to 4pm
Mon/Tues by appointment*



SAT	SUN	MON	TUE	WED	THU	FRI	SAT	SUN	MON	TUE	WED	THU	FRI	SAT	SUN
23	24	25	26	27	28	29	30	1	2	3	4	5	6	7	8



LAKE GRACE ART GROUP

Sculpture, Print making, Painting, Textiles, Photography, Ceramics, Mixed media, Jewellery, Other

Lake Grace Regional Artspace
25 Stubbs St, Lake Grace
0447 791 399

6

VESSEL researching and investigating this word... the theme, shape, form and the subject itself... a mixed media collection of work influenced by VESSEL.

The Lake Grace Regional Artspace is on the main street, in the retail section of town, next to one coffee shop and across the road to the other.

Open every day 10am to 4pm



SAT	SUN	MON	TUE	WED	THU	FRI	SAT	SUN	MON	TUE	WED	THU	FRI	SAT	SUN
23	24	25	26	27	28	29	30	1	2	3	4	5	6	7	8



WEST CAPE HOWE WINES

Photography, Painting, Drawing, Mixed media

7

West Cape Howe Wines
14923 Muir Hwy, Mount Barker WA 6324
08 9892 1444

DRAWING OUR COMMUNITY TOGETHER showcases the artworks of Mt Barker Community College students, who have worked alongside local Noongar and Hazara storytellers to tell the story of their community. In our cellar door, discover Great Southern land and seascape photography from our guest artist- HARRY ROUT

West Cape Howe Winery is 11km west of Mt Barker on the Muir Hwy.

Open days 10am to 5pm Mon Sept 25 and weekends 11 am to 4pm



SAT	SUN	MON	TUE	WED	THU	FRI	SAT	SUN	MON	TUE	WED	THU	FRI	SAT	SUN
23	24	25	26	27	28	29	30	1	2	3	4	5	6	7	8



ART CHATTER GALLERY

Painting

8

Art Chatter Gallery
4 Langton Rd, Mt Barker WA 6324
0418 823 085

JOURNEYINGS celebrates the evolving work of the exhibiting artists throughout their involvement with the Art Trail. All paintings are in oil and include everything from representational to abstract works.

At the roundabout opposite the Shire Admin office, turn onto Langton Rd. You'll find us in the Strike Me Pink Garden Gallery on the left.

Open days 8:30am to 3:30pm



SAT	SUN	MON	TUE	WED	THU	FRI	SAT	SUN	MON	TUE	WED	THU	FRI	SAT	SUN
23	24	25	26	27	28	29	30	1	2	3	4	5	6	7	8



GALLERY SOBRANE

Mixed media, Street art, Painting

9

The Art Bank
21 Lowood Rd, Mount Barker WA 6324
0438 023 394

Experience the magic of renowned artist Sobrane- the first Australian woman to paint a silo! It's in Victoria! Her work is bold and unafraid! She has wall murals and exhibitions worldwide. You may have visited her in Broome.

The Art Bank gallery is in the beautiful historic building located on the corner of Lowood Rd and Short St.

Open days 9am to 3:30pm Sundays 10am to 3:30pm



SAT	SUN	MON	TUE	WED	THU	FRI	SAT	SUN	MON	TUE	WED	THU	FRI	SAT	SUN
23	24	25	26	27	28	29	30	1	2	3	4	5	6	7	8



THE ART SHED

Painting, Natural fibres, Photography, Mixed media

The Art Shed
 2 Mount Barker Rd, Mount Barker WA 6324
 0421 959 170

10

Celebrating our creative workshops with works by art facilitators Christine Baker, Joanne Francis and Caroline Smith. Additional paintings by Jude Clarke and Judy Leahy.

From the town centre travel west on Langton Road, left onto Mount Barker Road. The Art Shed is set back on the left directly opposite the Red Cross Shop.

Open days 10am to 3pm Weekends 10am to 2pm

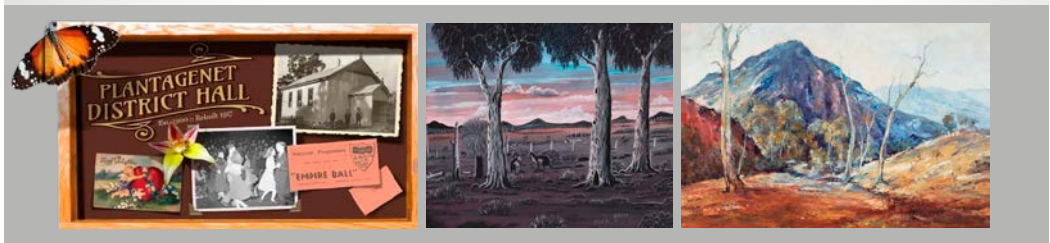


SAT	SUN	MON	TUE	WED	THU	FRI	SAT	SUN	MON	TUE	WED	THU	FRI	SAT	SUN
23	24	25	26	27	28	29	30	1	2	3	4	5	6	7	8

Congratulations ArtSouthWA on your 20th Anniversary event.

We wish all our Plantagenet artists a successful trail for 2023 and thank them for supporting ArtSouth WA and our own art collective for the past 20 years and beyond.

Enjoy your journey through our Shire, home of amazing murals, the Claude Hotchin Art Collection and our own Shire of Plantagenet collection.





THE STATION GALLERY

Painting

Mount Barker Visitor Centre
622 Albany Hwy, Mount Barker WA 6324
0458 681 708

11

WELCOME TO MOUNTAIN COUNTRY: The Station Gallery at the Mt Barker Visitor Centre is delighted to showcase a hand-picked selection of local artists, who share a passion for the Porongurup and Stirling Ranges and the surrounding lands. Works feature a variety of mediums, capturing the stunning beauty of our landscape.

Albany Hwy, opposite the Mitchell House Arts Centre.

Open every day 9am to 1pm



SAT	SUN	MON	TUE	WED	THU	FRI	SAT	SUN	MON	TUE	WED	THU	FRI	SAT	SUN
23	24	25	26	27	28	29	30	1	2	3	4	5	6	7	8



MITCHELL HOUSE

Sculpture, Painting, Encaustic, Drawing, Textiles, Ceramics, Mixed media, Resin

Cnr Albany Hwy and Ormond Rd, Mount Barker WA 6324
(Opposite Mt Barker Visitor Centre)
0419 903 016

12

WILD THINGS Nature creates wonder beyond human control. Our community art group has great imaginative variation in subject and materials. Where our minds land to make artworks within the possibilities of 'wild things' is wondrous to see. Where could your imagination go?

Look for the Pink House, corner Ormond Rd and Albany Hwy, opposite the Mt Barker Visitor Centre.

Open days 10am to 4pm



SAT	SUN	MON	TUE	WED	THU	FRI	SAT	SUN	MON	TUE	WED	THU	FRI	SAT	SUN
23	24	25	26	27	28	29	30	1	2	3	4	5	6	7	8



BRONTE WILKES

Mixed media, Painting

Bristle and Blue Gum Studio
35B Ingoldby St, Mount Barker WA 6324
0438 443 180

13

BRISTLE AND BLUE GUM A collection of joyful artworks that celebrate the vibrancy and liveliness of flora in nature. This year, Bronte is exhibiting in her very own home studio.

From Albany Hwy heading north, turn right onto Ormond Rd, turn left onto Deane St and right onto Ingoldby St, venue is on your left.

Open days 10am to 4pm



SAT	SUN	MON	TUE	WED	THU	FRI	SAT	SUN	MON	TUE	WED	THU	FRI	SAT	SUN
23	24	25	26	27	28	29	30	1	2	3	4	5	6	7	8



PORONGURUP ART SHED

Painting, Drawing, Textiles, Mixed media

14

Porongurup Shop
1972 Porongurup Rd, Porongurup WA 6324
0456 046 271

The Porongurup artists have come together again to showcase their broad range of art and craft styles and techniques.

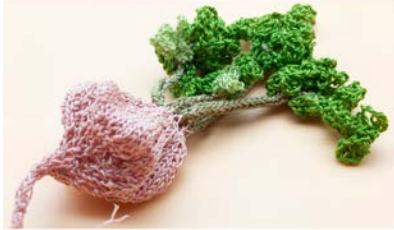
Enjoy the scenic drive along the Porongurup Rd and you'll find the Art Shed at the Porongurup Shop.

Open every day 9am to 5pm



SAT	SUN	MON	TUE	WED	THU	FRI	SAT	SUN	MON	TUE	WED	THU	FRI	SAT	SUN
23	24	25	26	27	28	29	30	1	2	3	4	5	6	7	8

the gardener Sarah Walker



16 Sept - 15 Oct 2023 | Petrichor Gallery

SARAH WALKER

Textiles

15

Petrichor Gallery
8 Nockolds St, Walpole WA 6398
08 9840 1381

THE GARDENER A solo exhibition by textile artist Sarah Walker. As a garden grows, smiles will form, spirits will lift, and hearts will blossom. 'The Gardener' is a shout-out (in yarn) to all those who love their gardens.

Petrichor Gallery is located on the main street of Walpole, adjacent to the South Coast Highway.

Open every day 10am to 4pm




SAT	SUN	MON	TUE	WED	THU	FRI	SAT	SUN	MON	TUE	WED	THU	FRI	SAT	SUN
23	24	25	26	27	28	29	30	1	2	3	4	5	6	7	8

 **Hilton**
Garden Inn™
Albany

3 Toll Place
Albany WA
hilton.com
08 9872 9200



 hiltongardeninnalbany

Together
& Co.

Bar & Restaurant
Open Daily
Full Buffet Breakfast
À la Carte Dinner
Open To Public





ELIZABETH EDMONDS

Drawing, Painting

Petrichor Gallery
8 Nockolds St, Walpole WA 6398
08 9840 1381

16



A TALE OF TWO TREES Solo exhibition by Elizabeth Edmonds, celebrating two iconic trees- the Red-flowering gum and the Red Tingle- in an environmental narrative combining art and science.

Petrichor Gallery is located on the main street of Walpole, adjacent to the South Coast Hwy.

Open every day 10am to 4pm



SAT	SUN	MON	TUE	WED	THU	FRI	SAT	SUN	MON	TUE	WED	THU	FRI	SAT	SUN
23	24	25	26	27	28	29	30	1	2	3	4	5	6	7	8



GAIL GUTHRIE OF MAJESTIC MERINO

Textiles, Photography

106 Riverside Dr, Nornalup WA 6333
0427 689 028

17

FROM PHOTO TO TEXTILE Embroidery and fabric manipulation and interpretation of photography. Photos, textile pieces and kits are available.

My studio is the last house on Riverside Dve, off South Coast Hwy, Nornalup. Go to the very end of the road to the turn-around-tree, turn right and take 2nd left. Look for the studio signs.

Open every day 10am to 3pm



SAT	SUN	MON	TUE	WED	THU	FRI	SAT	SUN	MON	TUE	WED	THU	FRI	SAT	SUN
23	24	25	26	27	28	29	30	1	2	3	4	5	6	7	8



PAUL MONCRIEFF

Sculpture, Painting, Drawing, Textiles, Mixed media, Assemblage

Kent River Studio
4310 South Coast Hwy, Kentdale WA 6333
0413 117 192

18

Paul Moncrieff and Jillian Green are showing recent work. Both artists have a substantial record of professional practice. Their work is held in many public and private collections.

Kent River Studio is situated 31km west of Denmark, on South Coast Hwy, just before the Kent River.

Open every day 10am to 4pm



SAT	SUN	MON	TUE	WED	THU	FRI	SAT	SUN	MON	TUE	WED	THU	FRI	SAT	SUN
23	24	25	26	27	28	29	30	1	2	3	4	5	6	7	8



INNER VISION STUDIO

Polymer Clay, Jewellery, Sculpture

Denmark Farmhouse Cheese
1678 Scotsdale Rd, Denmark WA 6330
0473 895 492

Millefiori polymer clay artist, Melanie Allan, showcases a range of original jewellery, art and oddities using slices of her own millefiori canes to achieve highly detailed and unique designs.

Leave Denmark township via Scotsdale Rd and travel for 17km. Denmark Farmhouse Cheese is on the right.

Open days 10am to 4pm

19



SAT	SUN	MON	TUE	WED	THU	FRI	SAT	SUN	MON	TUE	WED	THU	FRI	SAT	SUN
23	24	25	26	27	28	29	30	1	2	3	4	5	6	7	8



MARION NELSON

Origami Artworks

Chimes Spa Retreat
467 Mt Shadforth Rd, Denmark WA 6333
0438 409 330

POSITIVE VIBRATIONS Come and view the intricate origami art created with exquisite paper. Feel the positive energy. Experience the calm and serenity.

From Denmark town centre, turn right into Strickland St and immediately turn left onto Mount Shadforth Rd. Continue for 4.7km and Chimes Spa Retreat will be on your left.

Open every day 11am to 5pm

20



SAT	SUN	MON	TUE	WED	THU	FRI	SAT	SUN	MON	TUE	WED	THU	FRI	SAT	SUN
23	24	25	26	27	28	29	30	1	2	3	4	5	6	7	8



CREATING AND PRINTING YOUR PRECIOUS MOMENTS TO CHERISH FOR YEARS TO COME

We provide specialist fine art printing and art reproduction service, with a focus on quality papers and products that will last a lifetime.

w. www.cutandcrop.com.au
e. cutandcropprinting@gmail.com
@ [cutandcropprintshop](https://www.instagram.com/cutandcropprintshop)





SISTERS OF EVE ART GALLERY

Mixed media

21

Sisters of Eve Art Gallery
251 Mt Shadforth Rd, Denmark WA 6333
0419 346 232

Multi-media paintings, including gemstones and crystals. Fine art and embellished prints. Each artwork tells a story of emotional and spiritual exploration, celebrating the life within us.

Turn left onto Mount Shadforth Rd at the IGA, past Mrs. Jones Cafe. Continue up the hill for 2 km. The gallery is sign posted on the left-hand side.

Open days 10am to 4pm



SAT	SUN	MON	TUE	WED	THU	FRI	SAT	SUN	MON	TUE	WED	THU	FRI	SAT	SUN
23	24	25	26	27	28	29	30	1	2	3	4	5	6	7	8



JONATHON HOOK

Painting, Ceramics

22

Jonathon Hook Gallery
Lot 109 Lantzke Rd, Scotsdale WA 6333
0481 099 125

BANKSIA LANDSCAPES This exhibition will introduce to the public a new media for this artist- paintings on canvas.

From Mt Shadforth Rd, turn onto Kearsley Rd that becomes Lantzke Rd and the venue is on the right. From Scotsdale Rd, turn onto Redman Rd then left onto Lantzke Rd and the venue will be on your left.

Open weekdays 10am to 5pm Weekends 12noon to 4pm



SAT	SUN	MON	TUE	WED	THU	FRI	SAT	SUN	MON	TUE	WED	THU	FRI	SAT	SUN
23	24	25	26	27	28	29	30	1	2	3	4	5	6	7	8



JUNE SMITH

Studio

23

4 Wishart Place, Denmark WA 6333
0438 998 403

HORIZON: ELEGANT, EXOTIC and HIGHLY DESIRABLE Beautiful works to brighten your day and make the inner child smile. An eclectic mix of paintings-still life, landscapes, figures and florals plus cards and prints.

From Denmark, travel Mt. Shadforth Rd for 1km, turn right onto Kearsley Rd, then right onto Wishart Place. The venue is first on the right.

Open days 10am to 4pm



SAT	SUN	MON	TUE	WED	THU	FRI	SAT	SUN	MON	TUE	WED	THU	FRI	SAT	SUN
23	24	25	26	27	28	29	30	1	2	3	4	5	6	7	8



HELEN AND LINDSAY OKAMOTO

Woodturning, Painting, Printmaking

7 Christina Cres, Denmark WA 6333
0409 087 087

24



KARRI ON TURNING is an exhibition using various mediums to highlight subjects in wood, acrylics, painting and printmaking.

From Denmark Visitor Centre travel west approximately 450m along South Coast Hwy, turn right into Jill St, then left into Christina Cres. The venue is the third house on the left.

Open every day 11am to 4pm



SAT	SUN	MON	TUE	WED	THU	FRI	SAT	SUN	MON	TUE	WED	THU	FRI	SAT	SUN
23	24	25	26	27	28	29	30	1	2	3	4	5	6	7	8



DENMARK VISITOR CENTRE GALLERY

Textiles, Mixed media, Ceramics, Painting

Denmark Visitor Centre Gallery
73 South Coast Hwy, Denmark WA 6333
08 9848 2065

25

GUIDED BY THE EARTH Chrissie Gregory, Sue Noakes and Jenny Wilson reveal layers of understanding of nature's treasures. The delicacy of ethereal works in textiles together with the alchemy of botanical printing result in delightful wearables and artworks. This collection ranges from intricate to bold and spontaneous.

Located in Denmark and less than 1 km from the bridge.

Open days 9:30am to 3:30pm



SAT	SUN	MON	TUE	WED	THU	FRI	SAT	SUN	MON	TUE	WED	THU	FRI	SAT	SUN
23	24	25	26	27	28	29	30	1	2	3	4	5	6	7	8



RIVERFRONT GALLERY

Painting, Sculpture, Drawing, Mosaic, Jewellery, Printmaking, Ceramics, Mixed media, Photography, Metalwork

Riverfront Gallery
6 Hollings Rd, Denmark WA 6333
0408 439 781

26

HUES AND TONES OF WESTERN AUSTRALIA An exhibition reflecting the diverse Kimberley to the towering forests and pristine beaches of the Great Southern, unique wildflowers and birdlife. Over 40 talented and experienced artists present a collection of beautiful paintings and quirky gift lines. From Albany, turn right after crossing the Denmark River Bridge. The gallery is 25m on the left.

Open every day 10am to 4pm



SAT	SUN	MON	TUE	WED	THU	FRI	SAT	SUN	MON	TUE	WED	THU	FRI	SAT	SUN
23	24	25	26	27	28	29	30	1	2	3	4	5	6	7	8



MILL ART GROUP

Painting, Textiles, Woodwork, Photography, Mixed media, Drawing, Printmaking

CRC Gallery
Strickland St, Denmark WA 6333
0428 711 074

27

Delight in the quality and diverse range of 13 local artists in the beautifully presented CRC gallery. 'Viewer's Choice' voting. All welcome!

From Albany, travel South Coast Hwy, cross the bridge, second right onto Strickland St. Look for Black, Orange and White signs.
From Walpole, travel South Coast Hwy, left after BP onto Strickland St. Look for those coloured signs.

Open every day 10am to 4pm



SAT	SUN	MON	TUE	WED	THU	FRI	SAT	SUN	MON	TUE	WED	THU	FRI	SAT	SUN
23	24	25	26	27	28	29	30	1	2	3	4	5	6	7	8



CORNELIA WYNNE CERAMICS

Ceramics

Somerton Farm Stall and Ceramics
192 Ocean Beach Rd, Denmark WA 6333
0488 561 964

28

Taking inspiration from the land and seascapes of WA and influenced by the art of her homeland, South Africa, Cornelia's practice is focussed on both wheel thrown and hand built functional pieces.

From Denmark, travel west on South Coast Hwy, left onto Ocean Bch Rd and the venue is 1.92km on your left. Studio carpark is behind the house.

Open every day 9am to 5pm



SAT	SUN	MON	TUE	WED	THU	FRI	SAT	SUN	MON	TUE	WED	THU	FRI	SAT	SUN
23	24	25	26	27	28	29	30	1	2	3	4	5	6	7	8



Ron and Marjan Fine Art

Unique and Stunning Classical Art in Albany





Studio/Gallery Arcadia

See venue details for opening hours during the Trail
Open during the year by appointment

0473 386 243

FB: RonandMarjan.FineArt
Insta: ron.and.marjan.fine.art





MELEAH FARRELL + NARELLE CLARK

Photography, Ceramics

29

Meleah Farrell Photography Studio | Gallery
45 Forsyth Glade, Kronkup Albany WA 6330
0415 666 767

IN THE SHALLOWS Be swept away with this exhibition by photographer Meleah Farrell and potter Narelle Clark as they reveal the diversity, richness and unique beauty of what lies 'in the shallows'.

From Albany, travel 24 km on Lower Denmark Rd, left onto Hortin Rd, right at the T-section, left onto Forsyth Glade, and follow until the end.

Open everyday 10am to 4pm



SAT	SUN	MON	TUE	WED	THU	FRI	SAT	SUN	MON	TUE	WED	THU	FRI	SAT	SUN
23	24	25	26	27	28	29	30	1	2	3	4	5	6	7	8



Rest, relax and restore at Chimes Spa Retreat

Featuring Origami Works by Marion Nelson

Book your Denmark accommodation
and spa experience at chimes.com.au

(08) 9848 2255 467 Mount Shadforth Rd, Denmark



SHELLEY BEACH ARTS CENTRE

Sculpture, Painting, Jewellery, Printmaking, Ceramics, Mixed media, Photography, Metalwork

Shelley Beach Arts Centre
1 Shelley Beach Rd, Kronkup WA 6330
0429 678 676

30

DIVERSEARTS Immerse in a versatile collection of artworks by local artists inspired by the stunning elements that surround us. View works from Taysha Barrett, Ria DiCola, Marion Nelson, Linda Chambers, Brad Lucas and Bjorn. Form and art from Woodbury Boston Primary School.

From Lower Denmark Road, turn onto Cosy Corner Road, right onto Coombes Road, left onto Shelley Beach Road.

Open every day 10am to 4pm



SAT	SUN	MON	TUE	WED	THU	FRI	SAT	SUN	MON	TUE	WED	THU	FRI	SAT	SUN
23	24	25	26	27	28	29	30	1	2	3	4	5	6	7	8



TORBAY GLASS STUDIO AND GALLERY

Sculpture, Glasswork, Painting

Torbay Glass Studio
Coombes Rd, Torbay Hill, Kronkup WA 6330
08 9845 1130

31

COLOUR AND LIGHT Glass is light, Light is energy, and the three are inseparable. Combined with colour the result is magic, these are the essence of a painting.

From Lower Denmark Rd turn south onto Cosy Corner Rd, after 3.5km turn right onto Coombes Rd, the studio is 1.5km on your right. (Do not follow Google Maps as it's wrong)

Open every day 10am to 4pm



SAT	SUN	MON	TUE	WED	THU	FRI	SAT	SUN	MON	TUE	WED	THU	FRI	SAT	SUN
23	24	25	26	27	28	29	30	1	2	3	4	5	6	7	8



THE ATELIER AT BEAUMARIS ESCAPE

Painting, Mixed media

The Atelier at Beaumaris Escape
72 Wilgie Rd, Torbay WA 6330
0420 907184

32

Artist Tanya McBurney captures the enchantment of yesteryear with stylishly curated antiquities that assemble into pieces whispering stories of generations gone by. Tanya's artwork is juxtaposed by contemporary painter and textile artist, Kylie Porter, whose stunning collection captures her love of land, flora, and fauna.

Take Lower Denmark Rd through Elleker, after 4km turn left into Wilgie Road- No 72.

Open days 10am to 4pm



SAT	SUN	MON	TUE	WED	THU	FRI	SAT	SUN	MON	TUE	WED	THU	FRI	SAT	SUN
23	24	25	26	27	28	29	30	1	2	3	4	5	6	7	8



SAT	SUN	MON	TUE	WED	THU	FRI	SAT	SUN	MON	TUE	WED	THU	FRI	SAT	SUN
23	24	25	26	27	28	29	30	1	2	3	4	5	6	7	8

MERRY ROBERTSON

Printmaking, Drawing, Mixed media, Other

The Merry Press Studio
23 Grove St East, Little Grove WA 6330
0414 703 433

NATURE'S WINDOW Be delighted at the variety of works on offer based on natural themes - birds, fauna, and flora of the region. Through originals, prints, handmade books, cards, and more, attention is brought to species and their environments that need our support.

Turn left onto Spring St off Frenchman Bay Rd. At end turn left into Grove St East. Go up 3rd driveway on right. Rachel Doring is exhibiting here too.

Open days 10 am to 4pm

33



SAT	SUN	MON	TUE	WED	THU	FRI	SAT	SUN	MON	TUE	WED	THU	FRI	SAT	SUN
23	24	25	26	27	28	29	30	1	2	3	4	5	6	7	8

RACHEL DORING ART

Painting

The Merry Press Studio
23 Grove St East, Little Grove WA 6330
0487 460 294

Intuitive, bold, and thought-provoking. Rachel works consistently as an oil painter but incorporates mixed media such as linocuts, spray paint, inks and acrylic. Rachel is exhibiting with Merry Robertson.

Follow directions as per Merry Robertson 33 above.

Open days 10am to 4pm

34

albany
tours

ADVENTURE
with us to the Granite Skywalk

Book direct
busybluebus.com.au



PHOENIX FINE ARTS

Painting, Sculpture, Drawing

Albany's Historic Whaling Station
81 Whaling Station Rd, Torndirrup WA 6330
08 9844 4021

PHOENIX ARISING Seven local talents have joined forces, taking it to another level! Displaying some of the best local art. Exhibiting artists: Abigail Parker, Suzanne Randall, Ron Baker, Dianne Buxton, Helen Heerey, Margaret Dowdell, Marjan Bakhtiarikish.

From Albany, take Princess Royal Dr west for 2kms, turn left onto Frenchman Bay Rd. After 18kms, turn right onto Whaling Station Rd.

Open every day 9am to 5pm

35



SAT	SUN	MON	TUE	WED	THU	FRI	SAT	SUN	MON	TUE	WED	THU	FRI	SAT	SUN
23	24	25	26	27	28	29	30	1	2	3	4	5	6	7	8



ALBANY ART GROUP

Sculpture, Painting, Encaustic, Drawing, Printmaking, Ceramics, Mixed media

Vancouver Arts Centre
85 Vancouver St, Albany WA 6330
0473 386 243

COLOURS OF BEAUTY A must-see venue to explore a dynamic and vibrant display of artworks from over 30 artists of this local group spanning 60 years! Great opportunity to watch demos and chat with artists.

Travel south on York St, turn right onto Grey St, and take one of the next 4 streets on your left then right onto Vancouver St.

Open every day 10am to 4pm

36



SAT	SUN	MON	TUE	WED	THU	FRI	SAT	SUN	MON	TUE	WED	THU	FRI	SAT	SUN
23	24	25	26	27	28	29	30	1	2	3	4	5	6	7	8



Perth to Albany and everywhere
inbetween

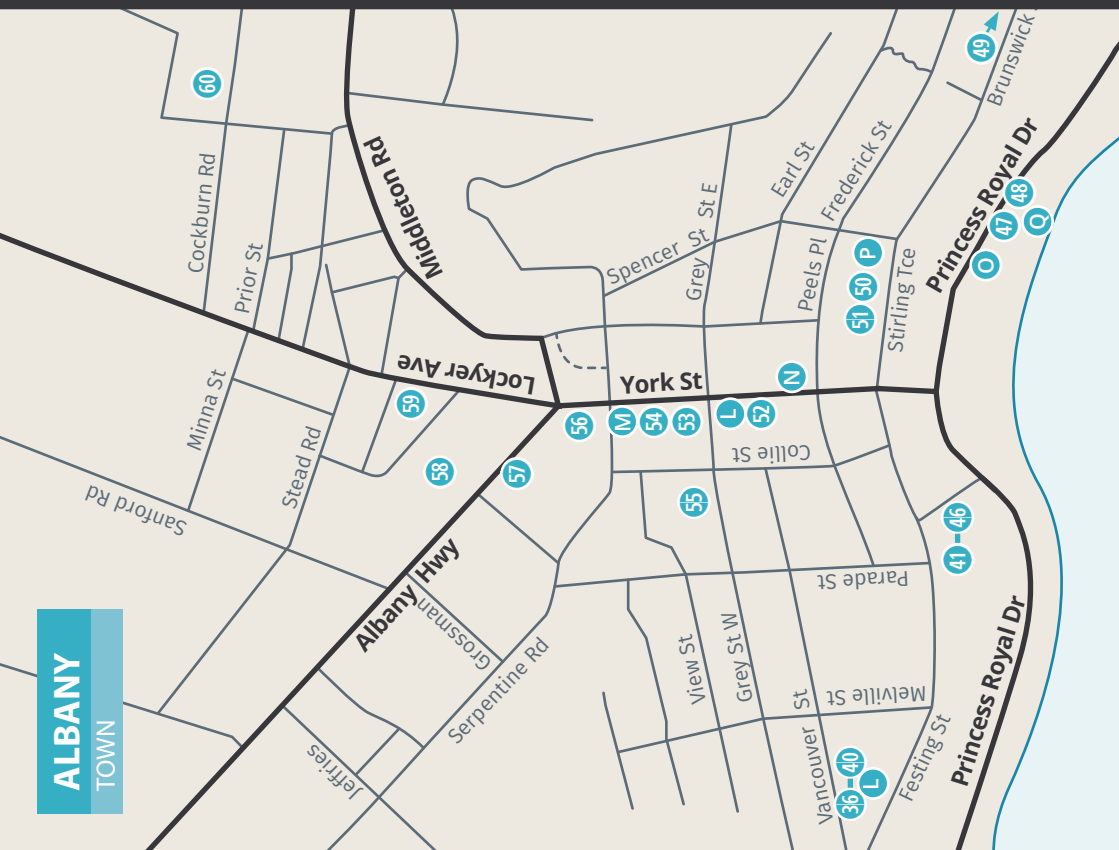
www.greatsoutherncouriers.com.au
info@greatsoutherncouriers.com.au

0429 446 466



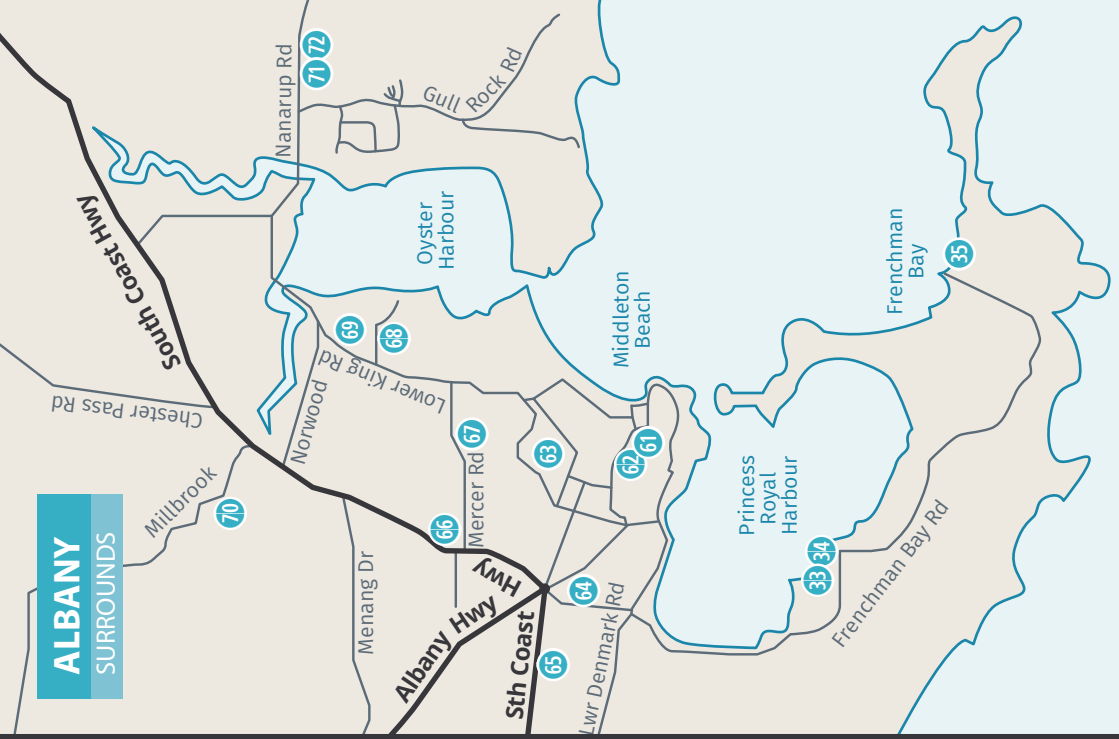
ALBANY

TOWN

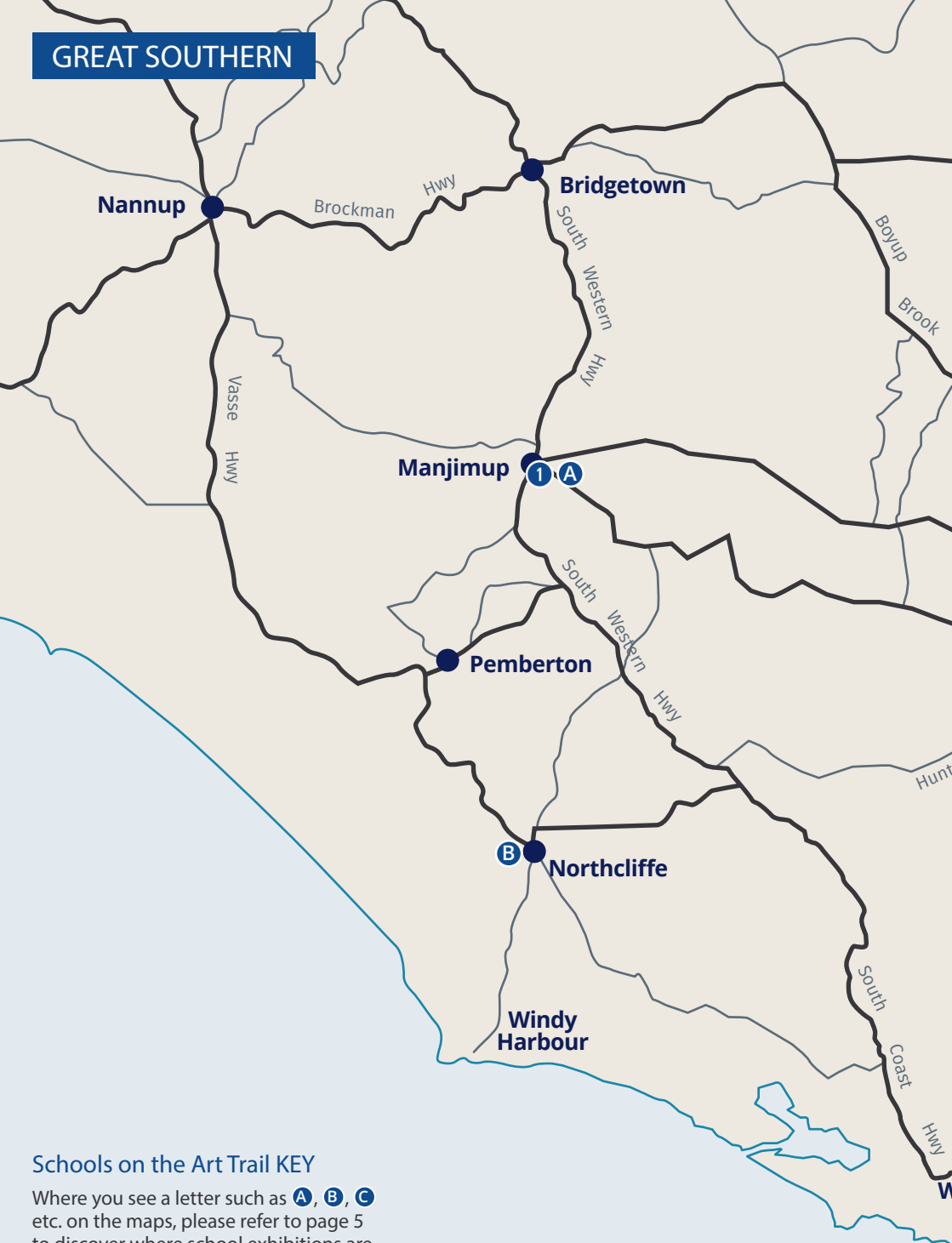


ALBANY

SURROUNDS



GREAT SOUTHERN



Schools on the Art Trail KEY

Where you see a letter such as **A**, **B**, **C** etc. on the maps, please refer to page 5 to discover where school exhibitions are located.

See WA
details



Kojonup

2

D Katanning 40Km

E 4 Dumbleyung 93Km

F Newdegate 225Km

Broomehill

Tambellup

Cranbrook

C Frankland

Rocky Gully

Mt Barker

H 7 7 Venues

See MT BARKER detailed map

Nornalup

17

5 Venues

See WALPOLE detailed map

Valley of the Giants Rd

Bow Bridge

19

22

7 Venues

See DENMARK detailed map

Denmark

5 Venues

See TORBAY detailed map



Lake Grace 95Km G 5 6

Gnowangerup

Ongerup

Jerramungup

Borden

ndenup

er

gurups

Jackson

llbrook

Manypeaks

Albany

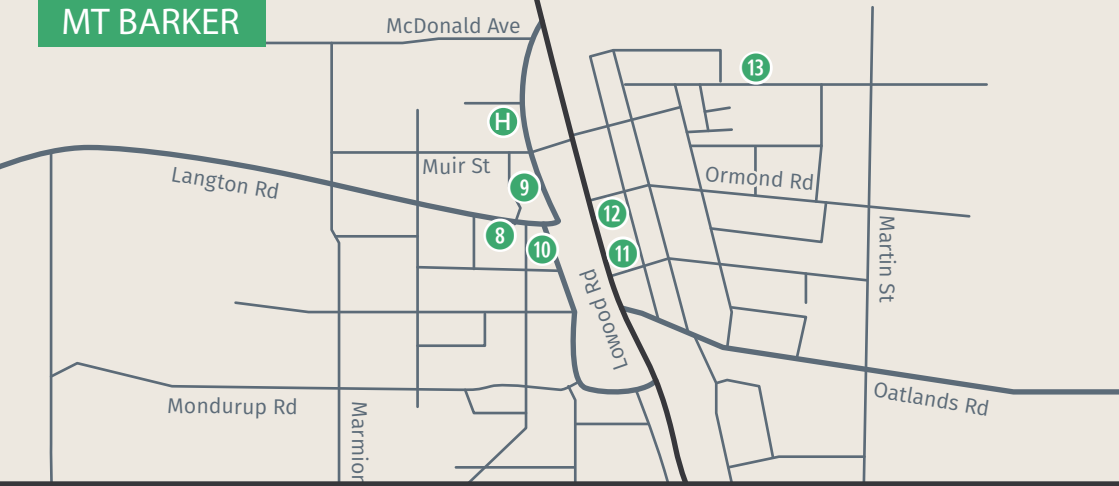
47 Venues

See ALBANY detailed maps

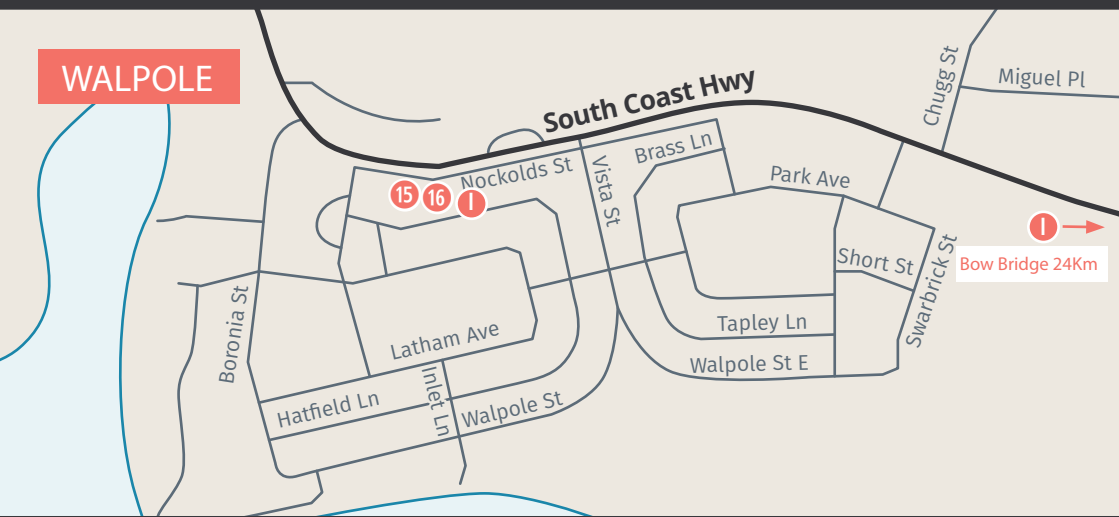
Maps are for reference only
We recommend using more comprehensive local maps to assist you to find venues.

- 1 Manjimup Arts Hub Inc.**
39 Giblett St, Manjimup
- 2 Gallery Aura**
100 Albany Hwy, Kojonup
- 3 Gnowangerup CRC**
47 Yougenup Rd, Gnowangerup
- 4 Kerry Scally**
48 Absolon St, Dumbleyung
- 5 Tania Spencer**
27 Bennett St, Lake Grace
- 6 Lake Grace Art Group**
25 Stubbs St, Lake Grace
- 7 West Cape Howe Wines**
14923 Muir Hwy, Mount Barker
- 8 Art Chatter Gallery**
4 Langton Rd, Mt Barker
- 9 Gallery Sobrane**
21 Woodwood Rd, Mount Barker
- 10 The Art Shed**
2 Mount Barker Rd, Mount Barker
- 11 The Station Gallery**
622 Albany Hwy, Mount Barker
- 12 Mitchel House**
Cnr Albany Hwy and Ormond Rd, Mount Barker
- 13 Bronte Wilkes**
Bristle and Blue Gum Studio, 35B Ingoldby St, Mount Barker
- 14 Porongurup Art Shed**
1972 Porongurup Rd, Porongurup
- 15 Sarah Walker**
Petrichor Gallery, 8 Nockolds St, Walpole
- 16 Elizabeth Edmonds**
Petrichor Gallery, 8 Nockolds St, Walpole
- 17 Gail Guthrie of Majestic Merino**
106 Riverside Dr, Nornalup
- 18 Paul Moncrieff**
Kent River Studio, 4310 South Coast Hwy, Kentdale
- 19 Inner Vision Studio**
1678 Scotsdale Rd, Denmark
- 20 Marion Nelson**
467 Mt Shadforth Rd, Denmark
- 21 Sisters of Eve Art Gallery**
251 Mt Shadforth Rd, Denmark
- 22 Jonathon Hook**
Lot 109 Lantzke Rd, Scotsdale
- 23 June Smith**
4 Wishart Place, Denmark
- 24 Helen and Lindsay Okamoto**
7 Christina Cres, Denmark
- 25 Denmark Visitor Centre Gallery**
73 South Coast Hwy, Denmark
- 26 Riverfront Gallery**
6 Hollings Rd, Denmark
- 27 Mill Art Group**
CRC Gallery, Strickland St, Denmark
- 28 Cornella Wynne Ceramics**
Sommerton Farm Stall & Ceramics, 192 Ocean Beach Rd, Denmark
- 29 Meleah Farrell + Narelle Clark**
45 Forsyth Glade, Kronkup Albany
- 30 Shelley Beach Arts Centre**
1 Shelley Beach Rd, Kronkup
- 31 Torbay Glass Studio & Gallery**
Coombes Rd, Torbay Hill, Kronkup
- 32 The Atelier at Beaumaris Escape**
72 Wilgie Rd, Torbay
- 33 Merry Robertson**
23 Grove St East, Little Grove
- 34 Rachel Doring Art**
23 Grove St East, Little Grove
- 35 Phoenix Fine Arts**
Albany's Historic Whaling Station, 81 Whaling Station Rd, Torndirrup
- 36 Albany Art Group**
85 Vancouver St, Albany
- 37 Albany Pottery Group**
85 Vancouver St, Albany
- 38 FIGS: Felters of the Great Southern**
85 Vancouver St, Albany
- 39 John Manson**
85 Vancouver St, Albany
- 40 Isabelle + Ali Osborne**
85 Vancouver St, Albany
- 41 Nathan Watson**
Museum of the Great Southern, Residency Rd, Albany
- 42 Cynthia Orr**
Museum of the Great Southern, Residency Rd, Albany
- 43 Make A Scene Artists**
Museum of the Great Southern, Residency Rd, Albany
- 44 Maxine Holman**
Museum of the Great Southern, Residency Rd, Albany
- 45 Rose Chapman-Hill**
Museum of the Great Southern, Residency Rd, Albany
- 46 Ulla Zettergren**
Museum of the Great Southern, Residency Rd, Albany
- 47 Ros Jenke + Julia Fletcher**
Albany Entertainment Centre 2 Toll Pl, Albany
- 48 Adventures in Wood**
Albany Boat Shed Princess Royal Dr, Albany
- 49 Derek Schapper**
36 Brunswick Rd, Albany
- 50 Liana Berry**
Dylans on The Terrace, 82 Stirling Tce, Albany
- 51 Down South Arts and Craft Collective Inc**
86 Stirling Tce, Albany
- 52 Butterscotch**
173 York St, Albany
- 53 Tracing Gondwana**
Albany Town Hall 217 York St, Albany
- 54 Interactive Children's Space**
Albany Town Hall 217 York St, Albany
- 55 Susha Manton**
160 Grey St West, Albany
- 56 Scout Seas**
84a Serpentine Rd, Albany
- 57 Nicci Daniele**
Behind ANZ Bank, 23 Albany Hwy, Albany
- 58 Deo Gloria Art Group**
Albany Plaza 38 Albany Hwy, Albany
- 59 Coastal Creations and Co**
Shop 6, 69-75 Lockyer Ave, Centennial Park Albany
- 60 Community Living Association**
56 Cockburn Rd, Albany
- 61 Helen Laing**
24 McKenzie St, Middleton Beach
- 62 Bronwen Newbury**
122 Hare St, Albany
- 63 Laura Newbury**
13 Nesbitt Rd, Spencer Park
- 64 The Eclectic Unity Group**
Noongar Community Centre, 365 Serpentine Rd, Mt Melville
- 65 Carol Hope**
Beryl Grant Community Centre 15 Townsend St, Lockyer
- 66 Designer Dirt Creatives**
2a/230 Chester Pass Rd, Albany
- 67 CoCreatives**
Carnaby's Function and Leisure Centre, 20 Talyberlup Way, Lange
- 68 Ron Baker + Marjan Bakhtiarikish**
78 Elizabeth St, Lower King Albany
- 69 Abigail Parker**
524 Lower King Rd, Lower King
- 70 King River Recreational Club**
1520 Millbrook Rd, King River
- 71 Bev Doig**
Lower Kalgan Hall, 516 Nanarup Rd, Kalgan
- 72 Lower Kalgan Hall Artists**
Lower Kalgan Hall, 516 Nanarup Rd, Kalgan
- 73 Ebony Harris**
Phillips Brook Estate, 118 Redmond- Hay River Rd, Albany
- 74 Catherine Higham**
Arthut360, 138 Bettys Beach Rd, Manypeaks

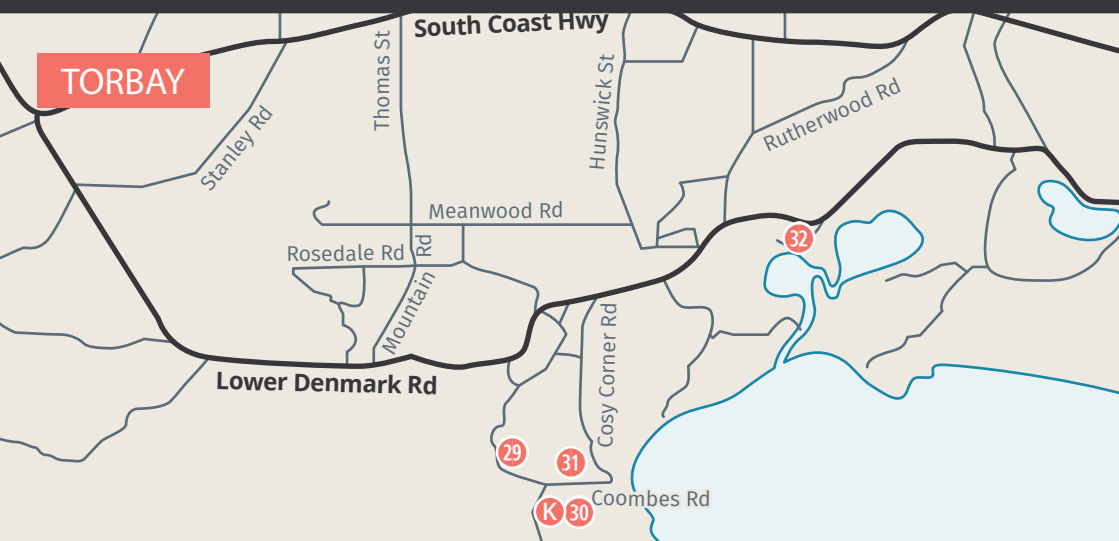
MT BARKER



WALPOLE



TORBAY



DENMARK



the Art of Scrimshaw

A once traditional pastime of bygone whalers, now sought-after and rare, takes centre stage in this new and exclusive exhibition. Featuring awe-inspiring artwork by internationally renowned Scrimshander, Gary Tonkin.



Visit discoverybay.com.au
or call **9844 4021**

81 Whaling Station Road, Torndirrup WA 6330



ALBANY POTTERY GROUP

Ceramics

Vancouver Arts Centre
85 Vancouver St, Albany WA 6330
0474 802 989

A popular exhibition featuring a wonderful variety of highly sought-after ceramic works from our talented group of potters.

Travel south on York St, turn right into Grey St, take on of the 4 next streets on your left and then right onto Vancouver St. The Pottery Workshop is behind the main building.

Open days 10am to 4pm

37



SAT	SUN	MON	TUE	WED	THU	FRI	SAT	SUN	MON	TUE	WED	THU	FRI	SAT	SUN
23	24	25	26	27	28	29	30	1	2	3	4	5	6	7	8



FIGS: FELTERS OF THE GREAT SOUTHERN

Textiles

Vancouver Art Centre
85 Vancouver St, Albany WA 6330
0488 483 400

THEN AND NOW - 10 YEARS OF FIGS We are textile artists using wool fibres and other materials to create an amazing range of functional and decorative felt items. View demonstrations and chat to artists.

Travel south on York St, turn right onto Grey St, take one of the next 4 streets on your left, then right onto Vancouver St.

Open every day 10am to 4pm

38



SAT	SUN	MON	TUE	WED	THU	FRI	SAT	SUN	MON	TUE	WED	THU	FRI	SAT	SUN
23	24	25	26	27	28	29	30	1	2	3	4	5	6	7	8

ART TRAIL EXHIBITION AWARD

The Southern Art and Craft Trail Event Exhibition Award

This award is given for the best overall Art Trail Exhibition by an individual or group. When you visit a location from this booklet you will be encouraged to complete a small survey and cast your vote for the best Exhibition 'experience'. You'll be asked to consider the quality of the work, the ambience of the exhibition and the personal interaction you have with the artists or organiser.

* Complete just one survey and go into the draw to win a voucher for two people for a Mt Barker Grape Escape full day wine tour, valued at \$398 donated by Busy Blue Bus Albany Tours, and a Hilton Garden Inn Albany voucher for 2 nights accommodation and 15% of further nights valued at \$320+.



surveymonkey.com/r/2023SACT



**Fill in our
survey online**

**You could win a
Busy Blue Tour &
Hilton Garden
Inn Albany
Vouchers***



JOHN MANSON

Painting

39

Vancouver Arts Centre
85 Vancouver St, Albany WA 6330
0415 914 399

From everyday views in and around Albany, I interpret and redesign them to produce interesting and aesthetically pleasing oil paintings. Travel south on York St, turn right onto Grey St, take one of the next 4 streets on your left, then right onto Vancouver St.

Open every day 10am to 4pm



SAT	SUN	MON	TUE	WED	THU	FRI	SAT	SUN	MON	TUE	WED	THU	FRI	SAT	SUN
23	24	25	26	27	28	29	30	1	2	3	4	5	6	7	8



ISABELLE OSBORNE & ALI OSBORNE

Sculpture, Jewellery, Printmaking, Photography, Drawing, Painting, Mixed media, Ceramics

40

Vancouver Arts Centre
85 Vancouver St, Albany WA 6330
0434 272 366

UNYIELDING The relationship between unrelenting form and mass, shaped by force and time. Sparked between mother and daughter—a visual response to nature's ever-changing elements and time. Inspired by our rugged southwest coastline and distinct craft-making modalities.

From York St, turn right onto Grey St, take one of the next 4 streets on your left, then right onto Vancouver St.

Open every day 10am to 4pm



SAT	SUN	MON	TUE	WED	THU	FRI	SAT	SUN	MON	TUE	WED	THU	FRI	SAT	SUN
23	24	25	26	27	28	29	30	1	2	3	4	5	6	7	8



NATHAN WATSON

Photography

41

Museum of the Great Southern - Co-Op Building,
Residency Rd, Albany WA 6330
0425 254 473

Enjoy this collection of breathtaking bird photographs. Nathan's images have won national and international awards. Using light in creative ways, his images are artistic and showcase the beauty of his avian subjects.

Travel south on York St, turn right onto Stirling Tce then left onto Residency Rd. Venue is on the right.

Open every day 10am to 4 pm



SAT	SUN	MON	TUE	WED	THU	FRI	SAT	SUN	MON	TUE	WED	THU	FRI	SAT	SUN
23	24	25	26	27	28	29	30	1	2	3	4	5	6	7	8



The Museum of the Great Southern wishes to congratulate the Southern Art and Craft Trail on its 20th Anniversary.

Come see venues 41-46 in the Co-op building and pop-up galleries.

Residency Rd, Albany WA 6330

visit.museum.wa.gov.au/greatsouthern



SAT	SUN	MON	TUE	WED	THU	FRI	SAT	SUN	MON	TUE	WED	THU	FRI	SAT	SUN
23	24	25	26	27	28	29	30	1	2	3	4	5	6	7	8

CYNTHIA ORR

Painting

42

Museum of the Great Southern- Pop-Up Galleries
Residency Rd, Albany WA 6330
0447 211 479

An exhibition of original and unique paintings. Cynthia is an award winning artist and creates beautiful, diverse and contemporary paintings that are well sought-after across the country.

Travel south on York St, turn right at Stirling Tce roundabout, left into Residency Rd, the venue is on the right.

Open every day 10am to 4pm



SAT	SUN	MON	TUE	WED	THU	FRI	SAT	SUN	MON	TUE	WED	THU	FRI	SAT	SUN
23	24	25	26	27	28	29	30	1	2	3	4	5	6	7	8

MAKE A SCENE ARTISTS

Painting, Encaustic, Jewellery, Printmaking, Drawing, Textiles, Ceramics, Woodwork, Mixed media, Photography

43

Museum of the Great Southern- Pop-Up Galleries
Residency Rd, Albany WA 6330
0427 381 530

TRIPTYCH- A group, set or collection of Three. Exploration of exciting works created by our talented and varied artist collective. Trios, Trinity, Triad, Three-Fold.

Travel south on York St, turn right at Stirling Terrace roundabout, left into Residency Road, the venue is on the right.

Open every day 10am to 4pm



MAXINE HOLMAN

Painting

44

Museum of the Great Southern Co-Op Building
Residency Rd, Albany WA 6330
0417 918 201

AT ONE WITH NATURE Maxine captures the finest details in true botanical fashion with the very tip of a paintbrush. Fitzgerald River National Park to our South Coast flora and fauna, what is not to love about our environment?

Travel south on York St, turn right at Stirling Terrace roundabout, left into Residency Rd, the venue is on the right.

Open every day 10am to 4pm



SAT	SUN	MON	TUE	WED	THU	FRI	SAT	SUN	MON	TUE	WED	THU	FRI	SAT	SUN
23	24	25	26	27	28	29	30	1	2	3	4	5	6	7	8



ROSE CHAPMAN-HILL

Printmaking

45

Museum of the Great Southern- Pop-Up Galleries
Residency Rd, Albany WA 6330
0400 863 090

PRINTMAKING An exhibition of original, unique prints. Rose's images often have a personal connection. Many relate to the ocean and the country she lives in.

Travel south on York St, turn right at Stirling Tce roundabout, then left into Residency Rd. The venue is on the right.

Open every day 10am to 4pm



SAT	SUN	MON	TUE	WED	THU	FRI	SAT	SUN	MON	TUE	WED	THU	FRI	SAT	SUN
23	24	25	26	27	28	29	30	1	2	3	4	5	6	7	8



ULLA ZETTERGREN

Papier-mâché, Printmaking, Mixed media

46

Museum of the Great Southern Co-Op Building
Residency Rd, Albany WA 6330
0468 338 391

PAPERWORKS Using a unique method of joining handmade paper with papier-mâché (paper pulp) in the creation of bowls and platters. Also view prints on handmade paper, cards and papier-mâché birds and hearts.

Travel south on York St, turn right at Stirling Tce roundabout, then left into Residency Rd. The venue is on the right.

Open every day 10am to 4pm



SAT	SUN	MON	TUE	WED	THU	FRI	SAT	SUN	MON	TUE	WED	THU	FRI	SAT	SUN
23	24	25	26	27	28	29	30	1	2	3	4	5	6	7	8



ROS JENKE AND JULIE FLETCHER

Painting

47

Albany Entertainment Centre
2 Toll Pl, Albany WA 6330
0427 400 443

Julie and Ros have exhibited many times successfully in Southern Art and Craft Trail with the Albany Plein Air group and this year will exhibit jointly at the Albany Entertainment Centre.

Located on the Albany harbour foreshore, travel down York St, turn left onto Princess Royal Dr, turn right into Toll Place. The venue is on the right.

Open days 10am to 4pm



SAT	SUN	MON	TUE	WED	THU	FRI	SAT	SUN	MON	TUE	WED	THU	FRI	SAT	SUN
25	26	27	26	27	28	29	30	31	2	3	4	5	6	7	8



ADVENTURES IN WOOD

Sculpture, Painting, Woodwork, Mixed media

48

Albany Boat Shed
Princess Royal Dr, Albany WA 6330
0423 747 038

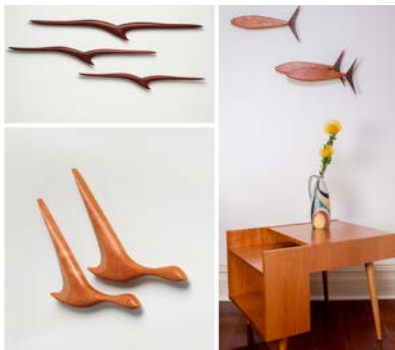
ADVENTURES IN WOOD A wonderful exhibition of bush furniture, wall hangings, coffee tables, handmade knives, boxes, jewellery, and a variety of other hand-crafted items made from local timbers.

Travel south down York St to the harbour. Turn left into Princess Royal Dr. and continue towards the Port. The venue is the 3rd large building on the right.

Open every day 9am to 4:30pm except Sunday 8 Oct 9am to 2pm



SAT	SUN	MON	TUE	WED	THU	FRI	SAT	SUN	MON	TUE	WED	THU	FRI	SAT	SUN
23	24	25	26	27	28	29	30	1	2	3	4	5	6	7	8



DEREK SCHAPPER

Woodwork

49

36 Brunswick Rd, Albany WA 6330
0417 096 204

A display of wall-mounted and freestanding sculpted birds and fish in local and exotic timbers, mostly in mid-century modernism style, including framed 3D renderings of idealized flora.

The studio and workshop are 4 mins from the Albany town centre. From York Street, turn left onto Stirling Terrace which becomes Brunswick Road. The house/ studio is on the left.

Open days 10am to 4pm



SAT	SUN	MON	TUE	WED	THU	FRI	SAT	SUN	MON	TUE	WED	THU	FRI	SAT	SUN
23	24	25	26	27	28	29	30	1	2	3	4	5	6	7	8

ART TRAIL COMMUNITY WORKSHOPS

Six different workshops offered as part of the Art Trail will see you explore and indulge your own artistic talents. See individual booking details for each one and the free Youth Arts space at the Albany Town Hall.



THE POWER OF PAPER

Learn the ancient art of paper-making with Fiona Glen and take away with your own exclusive papers and the skills to continue creating at home.

Date: Sunday 1st October 2023

Time: 10am to 3pm

Venue: The Art Shed, 2 Mount Barker Road, Mount Barker (directly opposite the Red Cross shop)

Cost: \$80 to \$90 LIMITED PLACES

Registration and details:

<https://SACT-Paper.eventbrite.com.au>



TRACING GONDWANA Print Workshop Series

Four days of printing from nature with Nikki Green.

Dates: 26 to 29 September 2023 (one workshop/day)

Time: 10am to 2pm

Venue: WA Museum Great Southern,

Cost: \$10 per workshop charged on booking.

Registration and details:

Museum of the Great Southern - 98414844

Workshop 1 (Tuesday 26th): Planting the seeds - drawing: mark making and the monoprint

Workshop 2 (Wednesday 27th): Cultivating new growth - cutting stencils / gelli plate prints

Workshop 3 (Thursday 28th): Botanical relief prints - from leaf frottage to lino block / hand coloured prints

Workshop 4 (Friday 29th): Mixed-media collage - combining monoprints, relief prints, drawing and painting



CREATIVE SPACE FOR KIDS

Kids and parents can get creative with help from the City of Albany creative team and celebrate the 20th Anniversary of the Southern Art and Craft Trail.

Day: 23, 25 - 28 September; 2 - 7 October

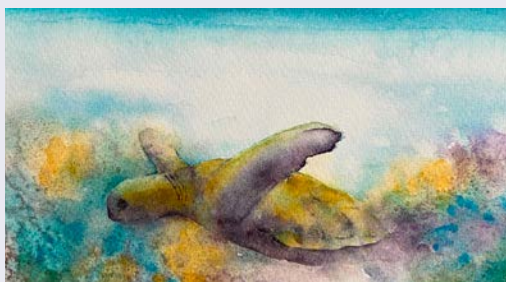
Time: 10am to 3pm

Venue: Albany Town Hall, York St, Albany

Cost: Free

Info: arts@albany.wa.gov.au | 6820 3853

artsandculture.albany.wa.gov.au/events/



WATER COLOUR MARINE

Learn the delicate art of water colour painting and explore marine themes with Helen Heery.

Day: Thursday 5th October 2023

Time: 10am to 4 pm

Venue: Historic Whaling Station, Albany

Cost: \$120 to \$130

Registration and details:

<https://SACT-Watercolour.eventbrite.com.au>

Brought to you by:





LIANA BERRY

Painting

Dylans on The Terrace
82 Stirling Tce, Albany WA 6330
0439 774 338

50

Inspired by the natural world and things that curate our life, Liana creates colourful, detailed gouache and watercolor paintings to create a sense of playfulness, curiosity, and comfort. Head upstairs at Dylan's on The Terrace to view Liana's paintings and also discover her words of creative encouragement.

From York St, left onto Stirling Tce, the venue is on the left.

Open days 8am to 4pm



SAT	SUN	MON	TUE	WED	THU	FRI	SAT	SUN	MON	TUE	WED	THU	FRI	SAT	SUN
23	24	25	26	27	28	29	30	1	2	3	4	5	6	7	8



ART
GIFTS
GARDEN

Proud
Art Trail
Sponsor

HUGE RANGE OF HOME, GARDEN + GIFTWARE

Sculptures to order
Over 20 local artisans
Windspinners + pots
Scarves, jewellery,
bodycare + sunscreen
Coffee
Relaxed shopping + easy
parking

Open 7 days

designerdirtwa.com.au

2a/230 Chester Pass Rd,
Albany





DOWN SOUTH ARTS AND CRAFT COLLECTIVE INC

Sculpture, Painting, Jewellery, Drawing, Metalwork, Textiles, Ceramics, Woodwork, Photography, Mixed media

Down South Arts and Crafts
86 Stirling Tce, Albany, 6330
0412 784 579

DSACC is a group of talented, local artists and artisans. We offer a unique range of collective art and gift wares in a wide range of traditional and eclectic art and craft. We have new members and new items on display and our door is open every day.

Find us on Stirling Tce, next to Dylan's Cafe.

Open every day 10am to 4pm Weekends 9am to 4pm

51



SAT	SUN	MON	TUE	WED	THU	FRI	SAT	SUN	MON	TUE	WED	THU	FRI	SAT	SUN
23	24	25	26	27	28	29	30	1	2	3	4	5	6	7	8



BUTTERSCOTCH

Painting

Butterscotch
173 York St, Albany WA 6330
0439 532 069

FLEUR features local artist Penny Baker who lives and works near the beautiful Kalgan River. A contemporary watercolour artist and avid gardener, Penny delights in every aspect of the botanical world and her still life paintings reflect this joy.

Travelling down York St, Butterscotch on the right between Grey St and Peels Place.

Open days 9am to 5pm Saturday 9am to 3pm

52



SAT	SUN	MON	TUE	WED	THU	FRI	SAT	SUN	MON	TUE	WED	THU	FRI	SAT	SUN
23	24	25	26	27	28	29	30	1	2	3	4	5	6	7	8



TRACING GONDWANA

Photography, Drawing, Printmaking, Mixed media

Albany Town Hall
217 York St, Albany WA 6330
08 6820 3850

TRACING GONDWANA Tracing Gondwana is a cross-art collaboration between 4 established and professional local artists (Nikki Green, Janine McCrum and Renee Pettitt - Schipp - Great Southern; and Monika Lukowska - Perth), weaving words with image to build awareness of the value of the Biodiversity Hotspot in the Great Southern.

The Albany Town Hall is on the main street of Albany.

Open days 10am to 5pm

53



SAT	SUN	MON	TUE	WED	THU	FRI	SAT	SUN	MON	TUE	WED	THU	FRI	SAT	SUN
23	24	25	26	27	28	29	30	1	2	3	4	5	6	7	8



INTERACTIVE CHILDREN'S SPACE

Other

54

Albany Town Hall
217 York St, Albany WA 6330
0488 419 301

CREATIVE SPACE FOR KIDS at the Albany Town Hall. Get creative upstairs during the school holidays to celebrate the 20th Anniversary of the Southern Art and Craft Trail.

Please check <https://artsandculture.albany.wa.gov.au/events/> for more info and any opening times changes. This event is staffed, however parent/guardian supervision is still required.

The Albany Town Hall is on the main street of Albany.

Open days 10am to 3pm



SAT	SUN	MON	TUE	WED	THU	FRI	SAT	SUN	MON	TUE	WED	THU	FRI	SAT	SUN
23	24	25	26	27	28	29	30	1	2	3	4	5	6	7	8



SUSHA MANTON

Painting

55

160 Grey St West, Albany WA 6330
0411 838 877

I continue to exhibit an eclectic mix of mostly acrylic semi-abstract paintings depicting Albany city and local landscapes, flora; and people in various situations.

From York St, turn onto Grey St West at the Town Hall. The venue is on the right past Collie St.

Open every day 10am to 4pm



SAT	SUN	MON	TUE	WED	THU	FRI	SAT	SUN	MON	TUE	WED	THU	FRI	SAT	SUN
23	24	25	26	27	28	29	30	1	2	3	4	5	6	7	8



SCOUT SEAS

Woodwork, Bathymetric Contour Art

56

84a Serpentine Rd, Albany WA 6330
0431 663 152

SCOUT SEAS MAPS reveal the contours of the sub-seafloor through art to connect us back to our special place. These pieces give a new perspective to the places we all swim, surf, dive, fish, explore & remember.

Travel north on York St, then left at Serpentine Road round-about. Venue is on the right next to Southcoast Diving Supplies.

Open days 10am to 4pm



SAT	SUN	MON	TUE	WED	THU	FRI	SAT	SUN	MON	TUE	WED	THU	FRI	SAT	SUN
23	24	25	26	27	28	29	30	1	2	3	4	5	6	7	8



a proud supporter of the arts

southerly

magazine

Wayne Harrington
 Ph: 0409 881 790
 E: wayne@southerlymag.com.au

BLOOM
Festival

SEPTEMBER - OCTOBER

KATANNING | KOJONUP | WOODANILLING | KENT
 CRANBROOK | GNOWANGERUP | PLANTAGENET
 BROOMEHILL | TAMBELLUP | JERRAMUNGUP
 BREMER BAY



SCAN FOR WHAT'S ON THIS
 BLOOM FESTIVAL





NICCI DANIELE

Sculpture, Ceramics, Jewellery, Painting

57

NRD Ceramics Studio Located behind ANZ Bank,
23 Albany Hwy, Albany WA 6330
0427 802 277

POTTERY AND PAINTINGS BY NIC & NAT Visit Nicci's working studio to be amazed by her stunning, intricate sculptures and functional ceramics. Complimenting these works are Natalie Zuchetti's figurative abstract oil paintings.

Located behind the ANZ bank on Albany Hwy, access the driveway between Tony's Hair Salon and ANZ Bank. Look out for banners in carpark to her studio.

Open days 10am to 3pm



SAT	SUN	MON	TUE	WED	THU	FRI	SAT	SUN	MON	TUE	WED	THU	FRI	SAT	SUN
23	24	25	26	27	28	29	30	1	2	3	4	5	6	7	8



DEO GLORIA ART GROUP

Photography, Painting, Ceramics

58

Albany Plaza
38 Albany Hwy, Albany WA 6330
0400 751 442

REVEALED Light draws us out of the darkness and brings us clarity. Join us on this journey to explore light's fleeting magic and the life it brings to everything it touches. Revealing and capturing THIS light is the essence of art.

Christine de Klerk, Ronel Shepherd, Vans Ceramics.

Look for our pop-up gallery in the Albany Plaza, Albany CBD

Open days 9am to 5pm Saturdays 9am to 4pm



SAT	SUN	MON	TUE	WED	THU	FRI	SAT	SUN	MON	TUE	WED	THU	FRI	SAT	SUN
23	24	25	26	27	28	29	30	1	2	3	4	5	6	7	8



COASTAL CREATIONS AND CO

Sculpture, Painting, Jewellery, Drawing, Glasswork, Textiles, Ceramics, Woodwork, Photography, Mixed media

59

Coastal Creations and Co
Shop 6, 69-75 Lockyer Ave, Albany WA 6330
0457 097 019

Coastal Creations and Co is a retail outlet that showcases over 50 local and regional WA Artisans and Creatives.

We are located on Lockyer Ave, opposite Dog Rock Woolworths. Parking available at front and rear of shop (via Alexander St) and also in the carpark across the road. Looking forward to seeing you.

Open every day 10am to 4pm



SAT	SUN	MON	TUE	WED	THU	FRI	SAT	SUN	MON	TUE	WED	THU	FRI	SAT	SUN
23	24	25	26	27	28	29	30	1	2	3	4	5	6	7	8



COMMUNITY LIVING ASSOCIATION

Mixed media

60

CLA Centre for Excellence
56 Cockburn Rd, Albany WA 6330
08 9842 3855

EXTRAORDINARY is an exhibition by artists living with a disability. It showcases disability expressed through mixed media. This exhibition enables the participation and inclusion of people, with disability, in their artistic community; and challenges disability stereotypes.

CLA Centre for Excellence is located minutes from Albany CBD at 56 Cockburn Rd, adjacent to the Vet hospital.

Open days 9am to 5pm Saturday 11am to 2pm



SAT	SUN	MON	TUE	WED	THU	FRI	SAT	SUN	MON	TUE	WED	THU	FRI	SAT	SUN
23	24	25	26	27	28	29	30	1	2	3	4	5	6	7	8



HELEN LAING

Painting, Drawing

61

24 McKenzie St, Middleton Beach WA 6330
0427 848 399

ICONS AND ANGELS An exhibition of mostly oil paintings inspired by archetypal images and dreams.

From the town centre, drive along Middleton Rd and turn right into McKenzie St. Park in the first driveway on the left or the signposted area on the right.

Open every day 10am to 4pm



SAT	SUN	MON	TUE	WED	THU	FRI	SAT	SUN	MON	TUE	WED	THU	FRI	SAT	SUN
23	24	25	26	27	28	29	30	1	2	3	4	5	6	7	8



BRONWEN NEWBURY

Painting, Mixed media

62

122 Hare St, Albany WA 6330
0422 998 178

CONVERSATIONS BY THE SEA is an exhibition of paintings inspired by the coastal areas around WA.

From Albany CBD, take Middleton Beach Rd towards the beach, turn right onto Hay St, then left onto Hare St. 122 is on the left and the studio is at the end of the driveway.

Open days 10am to 3pm



SAT	SUN	MON	TUE	WED	THU	FRI	SAT	SUN	MON	TUE	WED	THU	FRI	SAT	SUN
23	24	25	26	27	28	29	30	1	2	3	4	5	6	7	8



LAURA NEWBURY

Painting, Mixed media, Printmaking

13 Nesbitt Rd, Spencer Park WA 6330
0421 745 042

63

AFTER PARTY is a celebration of the joy, chaos and love surrounding mealtimes.

From Collingwood Road, turn left onto Warden Avenue. Take the immediate left on Nesbitt Road and follow the road halfway to number 13.

Open days 10am to 4pm



SAT	SUN	MON	TUE	WED	THU	FRI	SAT	SUN	MON	TUE	WED	THU	FRI	SAT	SUN
23	24	25	26	27	28	29	30	1	2	3	4	5	6	7	8



THE ECLECTIC UNITY GROUP

Painting, Drawing, Resin, Textiles, Woodwork, Printmaking, Jewellery

Noongar Community Centre
365 Serpentine Rd, Mt Melville WA 6330
0429 652 904

64

The Eclectic Unity Group brings together a community of Noongar and Wadjelara artists to showcase, for the first time together, their raw talent at the Albany Aboriginal Community Centre.

York St, turn onto Serpentine Rd, venue last building on the left. Travelling to Albany, take Hanrahan Road at the big roundabout, left onto Serpentine Rd, venue immediately on the right.

Open weekdays 10am to 4pm Weekends 10am to 5pm



SAT	SUN	MON	TUE	WED	THU	FRI	SAT	SUN	MON	TUE	WED	THU	FRI	SAT	SUN
23	24	25	26	27	28	29	30	1	2	3	4	5	6	7	8



CAROL HOPE

Printmaking, Painting, Drawing, Jewellery, Resin

Beryl Grant Community Centre
15 Townsend St, Lockyer WA 6330
0483 822 197

65

LIFE IN COLOUR I explore many art forms through the colour, light and shadows inspired by my surroundings.

From the big roundabout, travel 1km along South Coast Hwy, then left onto Townsend St. After 300m, turn right at the Beryl Grant Community Centre and the exhibition is located in the cafe.

Open days 9am to 4pm Weekends 9am to 2pm



SAT	SUN	MON	TUE	WED	THU	FRI	SAT	SUN	MON	TUE	WED	THU	FRI	SAT	SUN
23	24	25	26	27	28	29	30	1	2	3	4	5	6	7	8



DESIGNER DIRT CREATIVES

Sculpture, Printmaking, Metalwork, Glasswork, Textiles, Ceramics, Photography, Mixed media

Designer Dirt

2a/230 Chester Pass Rd, Albany WA 6330
0427 448 481

66



Carol Duncan, Chrissie Gregory, Ian Michael, Jane Michael, Jodie Edwards, Maria Serafin, Rachael Van Den Hoek, Ron Edwards, Tania Townsend. Peruse our creators' artworks and garden art, displayed in our unique setting.

From the big roundabout on Albany Highway, follow Chester Pass Rd for 2.5km, turn right into the Ardess Estate. Designer Dirt is 300m on the left.

Open Weekdays 9am to 5pm Weekends 9am to 4pm



SAT	SUN	MON	TUE	WED	THU	FRI	SAT	SUN	MON	TUE	WED	THU	FRI	SAT	SUN
23	24	25	26	27	28	29	30	1	2	3	4	5	6	7	8

COCREATIVES

Printmaking, Drawing, Sculpture, Painting, Photography, Mixed media

Carnaby's Function and Leisure Centre
20 Talyuberlup Way, Lange WA 6330
0447 881 601

67

We are a group of hobby artists led by Ronelle de Klerk and Eleanor Barber who meet at the Church of Christ, also known as Carnaby's Function and Leisure Centre. This year we are all about memories and sustainability, celebrating our unique backgrounds with up-cycled materials where possible.

Find us at 20 Talyuberlup Way, Lange, turning off Mercer Rd.

Open days 10am to 4pm



SAT	SUN	MON	TUE	WED	THU	FRI	SAT	SUN	MON	TUE	WED	THU	FRI	SAT	SUN
23	24	25	26	27	28	29	30	1	2	3	4	5	6	7	8



RON BAKER AND MARJAN BAKHTIARIKISH

Painting, Sculpture, Drawing, Other

78 Elizabeth St, Lower King Albany WA 6330
0473 386 243

68

ARCADIAN DREAMS Experience the joy of stepping into the classical world of timeless beauty. Our 'Studio Arcadia' will save you a trip to Europe's art galleries and magically captivate your senses!

From Albany, travel east on Lower King Rd, turn right onto Elizabeth St. The venue is 800 metres on the right.

Open days 9 am to 6 pm Closed days by appointment only



SAT	SUN	MON	TUE	WED	THU	FRI	SAT	SUN	MON	TUE	WED	THU	FRI	SAT	SUN
23	24	25	26	27	28	29	30	1	2	3	4	5	6	7	8



ABIGAIL PARKER

Painting, Jewellery, Drawing, Giclee prints, Cards

524 Lower King Rd, Lower King WA 6330
0403 783 669

69



EMERGENE'.. A COMING OF AGE An open-studio exhibition focused on conservation, local flora and fauna. Meet the artist at work. You'll find original paintings and drawings, quality photographic prints, and a wide range of cards, mementos and jewellery.

The location is 10km west of Albany, on Lower King Rd, past Marsh Wy. Look for the sign on the right.

Open days 9am to 4pm



SAT	SUN	MON	TUE	WED	THU	FRI	SAT	SUN	MON	TUE	WED	THU	FRI	SAT	SUN
23	24	25	26	27	28	29	30	1	2	3	4	5	6	7	8



KING RIVER RECREATIONAL CLUB INC

Sculpture, Painting, Encaustic, Jewellery, Ceramics, Mixed media, Textiles

King River Recreational Club Inc
1520 Millbrook Rd, King River WA 6330
0418 596 168

70

AROUND THE RIVER Evelyn Brown, Lois Drygan, Gail Gates, Helen Marshall, Libby Sippe, Annette Grant, Nadja Roelofs, Rusti Gardener, Sue Noakes, Fiona Sharp. Come see what we have all been creating this year - you are in for a treat.

From the big roundabout take Chester Pass Rd -12 km to Millbrook Rd, turn left, Hall is 200 metres on the left.

Open days 10am to 3pm



SAT	SUN	MON	TUE	WED	THU	FRI	SAT	SUN	MON	TUE	WED	THU	FRI	SAT	SUN
23	24	25	26	27	28	29	30	1	2	3	4	5	6	7	8



BEV DOIG

Printmaking, Drawing, Textiles

Lower Kalgan Hall
516 Nanarup Rd, Kalgan WA 6330
0438 587 717

71

This year Bev is in the fine company of other local artists at the Lower Kalgan Hall. Her artistic journey continues through the intriguing world of printmaking. Interested in a workshop? See the Arts Extras page for details.

Travel eastwards on Lower King/Nanarup Rd and over the bridges. 2km further, Hall is on the right just past Gull Rock Rd.

Open days 10am to 4pm



SAT	SUN	MON	TUE	WED	THU	FRI	SAT	SUN	MON	TUE	WED	THU	FRI	SAT	SUN
23	24	25	26	27	28	29	30	1	2	3	4	5	6	7	8



LOWER KALGAN HALL ARTISTS

Sculpture, Painting, Jewellery, Printmaking, Drawing, Glasswork, Mixed media, Ceramics

Lower Kalgan Hall
516 Nanarup Rd, Kalgan WA 6330
0439 662 650

72



Busy artists, workshops and Scones on Sundays! One space showcasing the diversity of local artisans: Bev Doig, Colin Montefiore, Lee Garvey, Vicki Brown, Barry Mackie, Barbara Cronin, Sharmare Mattinson, Sally Marshall and Wayne and Jang Pavey.

Travel eastwards on Lower King/Nanarup Rd and over the bridges. 2km further, the Hall is on the right just past Gull Rock Rd.

Open days 10am to 4pm



SAT	SUN	MON	TUE	WED	THU	FRI	SAT	SUN	MON	TUE	WED	THU	FRI	SAT	SUN
23	24	25	26	27	28	29	30	1	2	3	4	5	6	7	8



EBONY HARRIS

Painting

Phillips Brook Estate
118 Redmond- Hay River Rd, Albany WA 6330
0429 193 118

73

AFTERNOON DELIGHT An enticing collection of vibrant artworks- colours and subject matter evoking a Tuscan vibe. Ebony has taken inspiration from the citrus and olive trees at the stunning venue to create unique pieces to brighten your walls!

From Albany, north on Albany Hwy for 16km, left onto Redmond - Hay River Rd, venue is 1km on the right.

Open days 12noon to 4pm



SAT	SUN	MON	TUE	WED	THU	FRI	SAT	SUN	MON	TUE	WED	THU	FRI	SAT	SUN
23	24	25	26	27	28	29	30	1	2	3	4	5	6	7	8



CATHERINE HIGHAM

Painting, Sculpture, Mixed media

Arthut360
138 Bettys Beach Rd, Manypeaks WA 6328
0487 339 884

74

OPEN STUDIO Completed work including painting and sculpture.

Head east on Chester Pass Rd, turn right onto South Coast Hwy. Turn right onto Homestead Rd/Bettys Beach Rd. Go over a small weir, approximately 50m turn right to farm gate "Jeedamya". Drive up hill 1.5km to studio. Bring picnic, no cafes nearby.

Open days 10am to 4pm



SAT	SUN	MON	TUE	WED	THU	FRI	SAT	SUN	MON	TUE	WED	THU	FRI	SAT	SUN
23	24	25	26	27	28	29	30	1	2	3	4	5	6	7	8

DISCOVER UNIQUE ART



Let someone else do the driving and enjoy the region's food and wine along the way!

Art Trail Tours 2023

9:00am to 4:45pm

Albany Visitor Centre

\$199 per person

Lunch included

Inquiries
0418 414 425

Denmark/Walpole: 23 September
Mt Barker/Kojonup: 30 September

Tour details & bookings
busybluebus.com.au/tours

Supported by



ArtSouthWA

albany tours

ENTRIES FOR THE 2024 TRAIL - OUR 21ST BIRTHDAY!

Southern Art + Craft Trail

Sat 21 Sept to Sun 6 Oct, 2024

It's party time in 2024! Don't miss out on being part of the 21st birthday of Southern Art and Craft Trail Event. We invite you to exhibit with us again, or for the first time, next year. The Art Trail is an initiative of ArtSouthWA, an organisation formed to promote and market the visual arts and crafts of artists living and working in the greater southern region of Western Australia. See contact details below.

Entries close for 2024 in April

Artwork: Bronte Wilkes

MEMBERSHIP

ArtSouthWA membership is open to all visual artists and craftspeople located in the southern region of Western Australia. This includes galleries, art organisations and related businesses. You will be promoted for a full 12 months and have access to numerous member benefits. Contact us for more details.





admin@artsouthwa.com.au
www.artsouthwa.com.au



GREAT SOUTHERN DEVELOPMENT COMMISSION

Growing the Great Southern.

 gsdc.wa.gov.au  9842 4888  gsdc@gsdc.wa.gov.au

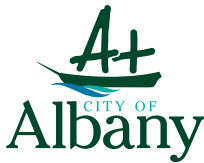
ACKNOWLEDGEMENTS



We thank the wonderful sponsors and contributors that supported us in 2023. Without their generosity and support, the Southern Art and Craft Trail would not be as widespread and engaging. We encourage all our followers to connect with, or become customers of all our generous supporters.

Grants and Sponsorship

PLATINUM



WESTERN AUSTRALIA

Community Bank
Albany

Bendigo Bank

SILVER



BRONZE



DONORS

Busy Blue Bus, Albany

West Cape Howe Wines, Mount Barker

Albany's Historic Whaling Station, Albany

Hilton Garden Inn Albany

SUPPORTERS

Strike Point Graphic Design and Printing, Albany

Adrenaline Design & Marketing, Perth

The Business Genie, Perth

THANK YOU

REGIONAL ARTS WA

RAF QUICK RESPONSE GRANTS



Ladies New Look Exhibition Opening Bidyadanga Community - Image by Sarah Landro

Quick Response Grants assist regional artists, arts organisations and communities to take up professional or skills development opportunities, or respond to small project opportunities that arise at short notice.

Up to \$3,000 for individuals and up to \$5,000 for organisations. Rounds open the first day of the month and close on the final day of the same month.

<https://regionalartswa.org.au/funding/quick-response-grant/>

REGIONAL
arts
AUSTRALIA



Australian Government
Regional Arts Fund

REGIONAL
ARTS WA





In 1914, more than 41,000 Australians and New Zealanders left Albany, bound for the First World War.

This is their story.

The **National Anzac Centre** is Australia's foremost museum dedicated to honouring the Anzacs of the First World War.

Follow the real life experience of one of 32 Anzac characters using interactive multimedia, unique artefacts, rare images and film, and audio commentary.

67 Forts Road, Albany, Western Australia | www.nationalanzaccentre.com.au



NATIONAL
ANZAC
CENTRE